



Duluth-Superior Metropolitan Interstate Council

MEETING NOTICE

Wednesday, August 18, 2010

**Training Center - Hermantown Public Safety Building
5111 Maple Grove Road, Hermantown MN**

Approval / Voting Items:

- Draft 2011-2014 Superior Area Transportation Improvement Program

Presentation / Discussion / Informational Items:

- Interactive Mapping - Long Range Transportation Plan Projects
- Kirkus Street Land Use Plan
- Developing Transportation Performance Measures for the Duluth-Superior Area
- Bicycle and Pedestrian Planning Update

Attendance / Meeting Quorum:

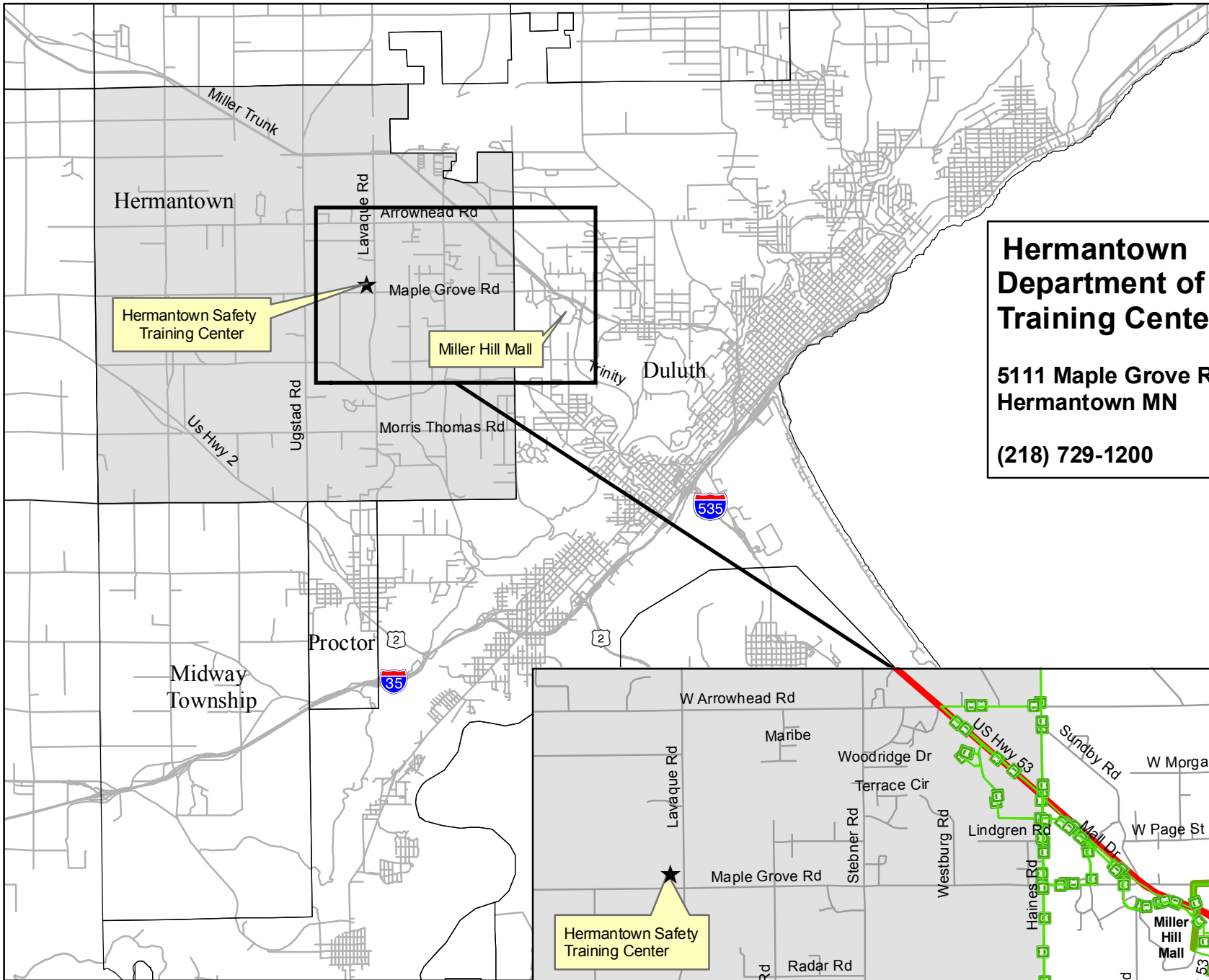
If you are NOT able to attend, or expect to arrive late to the meeting, please contact Rondi Watson at rwatson@ardc.org or 529-7541 to ensure a quorum will be present for voting items on the agenda.

Driving Directions & Parking Information: See map on reverse.

Duluth-Superior Metropolitan Interstate Council

Duluth and Superior Urban Area Communities Cooperating in Planning and Development through a Joint Venture of the Arrowhead Regional Development Commission and the Northwest Regional Planning Commission

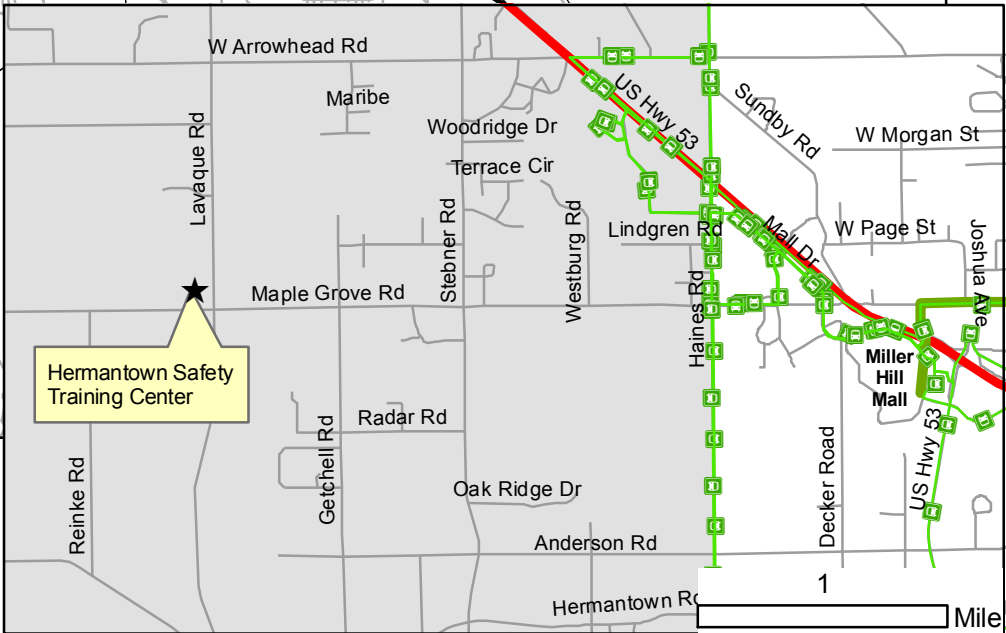
221 West First Street • Duluth, MN 55802 • 218/529-7541 • Fax 218/529-7592 • www.dsmic.org



**Hermantown
Department of Public Safety
Training Center**

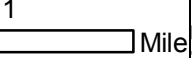
**5111 Maple Grove Rd
Hermantown MN**

(218) 729-1200



Legend

- DTA Bus Route
- Bike Routes**
- Primary On-Street Unsigned Route
- Bicycling Prohibited or Not Recommended





Metropolitan Interstate Council Policy Board Meeting

Wednesday, August 18, 2010 at 7:00 pm

Hermantown Public Safety Facility Training Center
Hermantown, MN

AGENDA

Minnesota Members

<p>City of Duluth Tony Cuneo Kerry Gauthier</p> <p>City of Duluth – Citizen Rep David Montgomery</p> <p>City of Hermantown Wayne Boucher</p> <p>City of Proctor Troy Foucault</p> <p>Duluth Transit Authority Melanie Hendrickson</p> <p>St. Louis County Steve O'Neil, <i>MN Co-Chair</i></p> <p>St. Louis County Suburban Townships Earl Elde Cindy Moe</p>	<p>1. Introductions / Agenda Review <i>5 min</i></p> <p>2. Committee Business</p> <ul style="list-style-type: none"> • Meeting Summary of July 21, 2010 (<i>for approval</i>) <p>3. Draft 2011-2014 Superior TIP <i>5 min</i></p> <ul style="list-style-type: none"> • Review for Approval-Release for Public Comment, <i>Sheldon Johnson</i> <p>4. Long Range Plan Projects Interactive Mapping <i>15 min</i></p> <ul style="list-style-type: none"> • Presentation and Discussion, <i>Kody Thurnau, Robert Herling</i> <p>5. Kirkus Street Land Use Plan <i>10 min</i></p> <ul style="list-style-type: none"> • Presentation and Discussion, <i>James Gittemeier</i> <p>6. Developing Transportation Performance Measures for the Duluth-Superior Area <i>15 min</i></p> <ul style="list-style-type: none"> • Presentation and Discussion, <i>Robert Herling</i> <p>7. Bicycle and Pedestrian Planning Update <i>15 min</i></p> <ul style="list-style-type: none"> • Presentation and Discussion, <i>James Gittemeier</i>
<p>Wisconsin Members</p> <p>City of Superior Warren Bender Denise McDonald Dan Olson</p> <p>City of Superior – Citizen Rep Ed Anderson</p> <p>Douglas County Keith Allen Nick Baker, <i>WI Co-Chair</i> Kay McKenzie Jim Paine</p> <p>Douglas County Suburban Townships Broc Allen</p>	<p>8. Project Updates <i>5 min</i></p> <ul style="list-style-type: none"> • I-35 Congestion Mitigation Ridership Study, <i>Robert Herling</i> • Arrowhead Regional Comprehensive Plan for Sustainability, <i>Ron Chicka</i> <p style="text-align: center;">Next Meeting: Wednesday, September 15, 2010, 7:00 pm WITC Conference Center, Superior, WI</p>

MIC Agenda Topics and Project Updates

August 18, 2010 Meeting



Duluth-Superior Metropolitan Interstate Council

* = Approval Item

1. INTRODUCTIONS / AGENDA REVIEW

2. COMMITTEE BUSINESS

- Meeting Summary of July 21, 2010* (see separate attachment)

3. DRAFT 2011-2014 SUPERIOR AREA TRANSPORTATION IMPROVEMENT PROGRAM* (see separate attachment)

The draft Superior TIP is attached for your review and comment. The TIP includes 4 years of federally funded transportation projects, as well as some of the significant state funded projects. The Draft TIP will be released for a 30-day public comment period, which will run from August 19 through September 17. The final TIP will be presented for approval at the October MIC meetings. For comments or questions, please contact Sheldon Johnson at sjohnson@nwrpc.com or (715) 635-2197, ext. 228.

4. LONG RANGE TRANSPORTATION PLAN PROJECTS INTERACTIVE MAPPING

An interactive map of the long-range transportation projects was developed as part of the MIC's LRTP, "Directions 2035." Staff will be using the August TAC and MIC meetings as an opportunity to showcase this tool and give a brief presentation of how to use it to get information about the specific projects listed in the LRTP. Please contact GIS Specialist Kody Thurnau at kthurnau@ardc.org or (218) 529-7515 or Planner Robert Herling at rherling@ardc.org or (218) 529-7573 for comments or questions.

5. KIRKUS STREET LAND USE PLAN

The task force is reviewing the current situation of Proctor and its surrounding area, including examining the housing and retail markets. This background information, as well as is being analyzed by the taskforce in an effort to devise a future land use strategy for the mostly undeveloped southern portion of Proctor. For comments or questions, please contact James Gittemeier at jgittemeier@ardc.org or (218) 529-7556.

6. DEVELOPING TRANSPORTATION MEASURES FOR THE DULUTH-SUPERIOR AREA

MIC staff attending the 2010 Minnesota MPO Conference in Fargo, ND last month were exposed to some good presentations regarding the increasing attention being given to performance measures in transportation planning. Much of this information was directly applicable to developing performance measures at the MPO level. A summary of this information will be presented to the TAC and MIC for discussion. The MIC's recently adopted LRTP, "Directions 2035" sets the stage for developing future performance measures relevant to the Duluth-Superior MPO, and staff at the MIC hope to work closely with TAC and MIC members in developing such

MIC Agenda Topics and Project Updates, continued

August 18, 2010 Meeting

Duluth-Superior Metropolitan Interstate Council

measures in the coming year that are both useful and appropriate in further advancing the various transportation objectives of the area. Please contact Robert Herling at rherling@ardc.org or (218) 529-7573 for comments or questions.

7. BICYCLE AND PEDESTRIAN PLANNING UPDATE

Information will be presented on the following two initiatives that are currently underway:

Bike-Ped Advisory Committee (BPAC)

MIC staff is implementing a new more interactive communication strategy for the BPAC. The BPAC will be the MIC's first committee where online social media outreach techniques will be undertaken. More information will be presented at the meeting.

Superior Bike Routes

The Bicycle Compatibility Index (BCI) model has been run for the proposed bike routes in Superior. MIC staff will present the BCI model results, and next steps including forming a steering committee to move this project forward.

Bike Signage Inventory

MIC staff are putting together a complete inventory of all the existing bike signage, including geographic coordinates utilizing GPS, as well as noting signage type and wayfinding arrow and text information specific to each sign location.

Connecting Duluth Bike Route Assessment

The data collected from the 6 public meetings has been compiled. At the meeting, MIC staff will present a series of draft maps illustrating the information collected including routes cyclists currently use and routes cyclists would prefer to use. The goal of the assessment is to serve as a reference tool for planners, engineers, and other groups working to improve Duluth's bike route system.

8. Project Updates

I-35 Congestion Mitigation Ridership Study, Robert Herling

The MIC is awaiting word from MnDOT's Office of Transit as to whether the DTA will be receiving funding designated for studying the effectiveness of transit mitigation during major construction projects. The DTA has applied for this funding in hopes of being able to gather additional information about the effectiveness of its increased service along Grand Ave. during the 2010-2011 I-35 "Mega Project."

ARDC Regional Comprehensive Plan for Sustainability/Livability Project, Ron Chicka

ARDC is seeking to form a consortium that will apply for the federal Sustainable Communities Planning Grant (SCPG). Based on the grant's guidance, ARDC proposes that the SCPG application cover the entire seven-county Arrowhead Region and at a minimum, the Arrowhead Sustainability Consortium will include the Metropolitan Interstate Council, the City of Duluth, St. Louis County, at least one regional Foundation, at least one Tribe, Iron Range Resources, and the

MIC Agenda Topics and Project Updates, continued

August 18, 2010 Meeting

Duluth-Superior Metropolitan Interstate Council

Northeast Minnesota Regional Sustainable Development Partnership. The amount requested is to be \$1,000,000. To get to the match needed each Partner (including the MIC) would be asked to provide \$10,000 of commitment which can be in-kind (staff time).

Potentially, this ARDC grant would direct funds our way that would go toward MIC projects currently in the mix that adhere to the criteria of the grant - many things that we're doing in the promotion of alternative modes and work regarding infill and Brownfield development in the MIC area jurisdictions. Also, this amount of time commitment would be spread out over the course of three years. After consultation with the MIC Board Chairs, I sent a letter of support on behalf of the MIC for inclusion in the application materials, due August 23rd to the U.S. Department of Housing and Urban Development.