

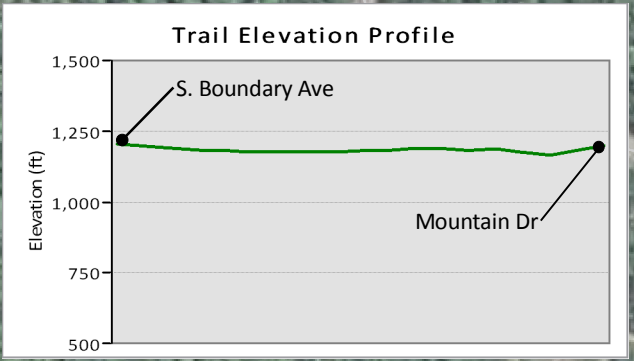
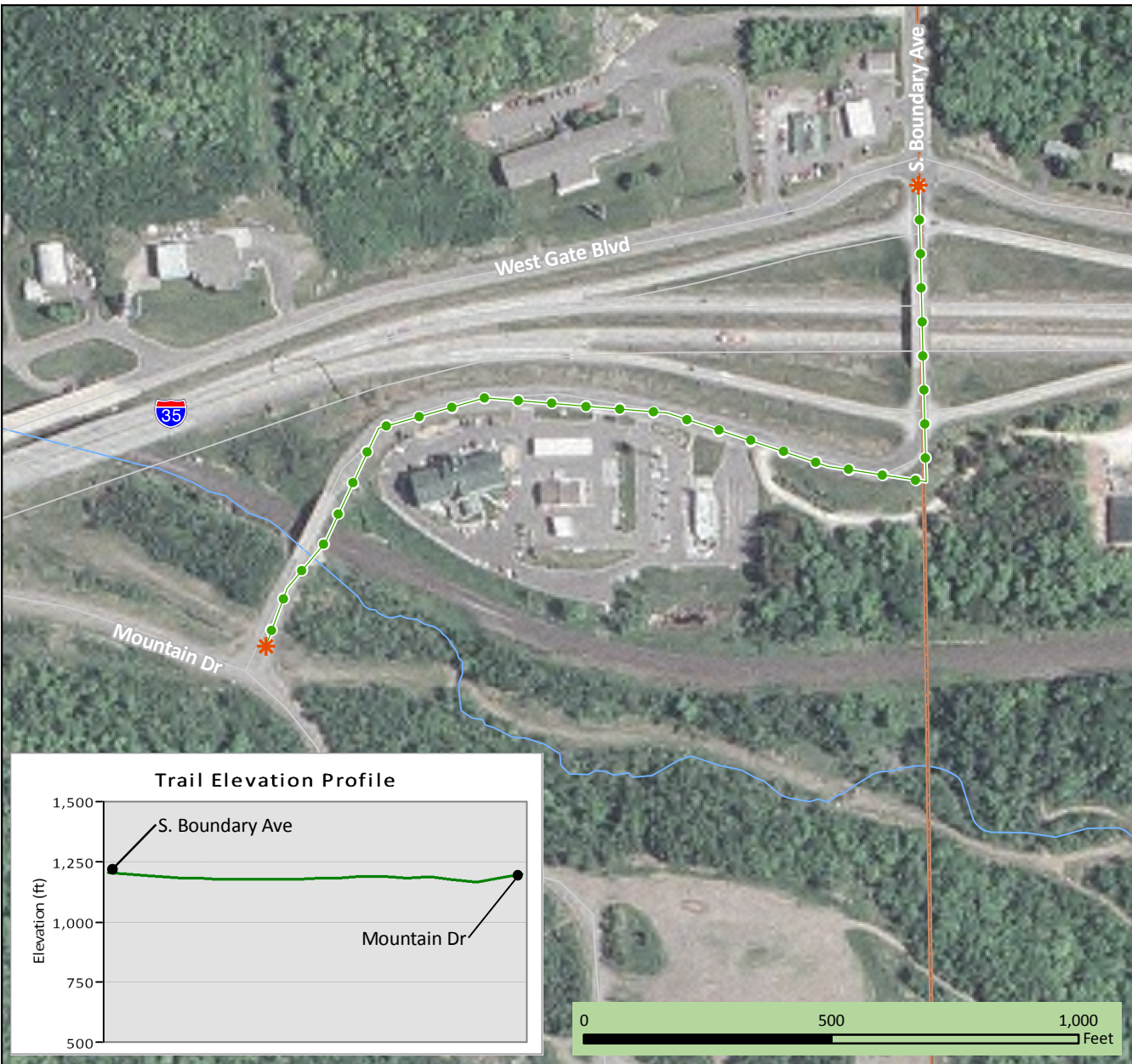
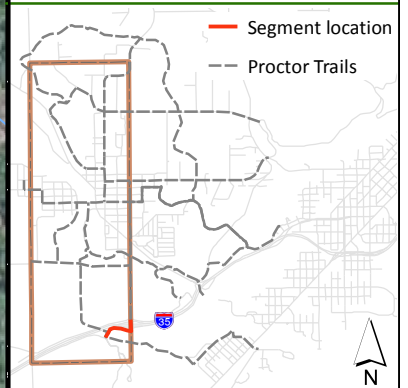
TRAIL SEGMENTS

Skyline Parkway at I-35 Trail

Start: S. Boundary Ave
End: Mountain Dr
Trail length: 0.4 mi
Trail type: Shared roadway/
 sidewalk path

Legend

- Trail Segment
- Segment Start/End Points
- Proctor
- Road
- Stream



SKYLINE PARKWAY at I-35 TRAIL

Runs along Boundary Avenue from West Gate Boulevard across I-35 and the CN railroad tracks to Mountain Drive.

Trail Surface:

- ◇ Existing: no sidewalks & limited shoulder
- ◇ Proposed: shared roadway for bicyclists and sidewalks on at least one side for pedestrians

Details:

- ◇ The trail is an important connection between the areas north of I-35, including Proctor and Hermantown, to the areas south of the interstate, including Spirit Mountain, Skyline Parkway, and West Duluth.
- ◇ When Boundary Avenue Bridge over I-35 is replaced, include shoulders and sidewalks for bike and pedestrian users.



Segment of Skyline Pkwy between Spirit Mountain and I-35



Limited space for trail on Skyline Pkwy/Boundary Ave to cross over I-35 bridge