

MEETING NOTICE



TRANSPORTATION ADVISORY COMMITTEE

Tuesday, June 17, 2008 at 1:30 p.m.

Hermantown Public Safety Building
5111 Maple Grove Road
Hermantown, MN

Action Items / Review for Approval:

- 2008-2011 Superior Area TIP Amendment #5
- Long Range Transportation Plan 2035 Update – Scope of Work

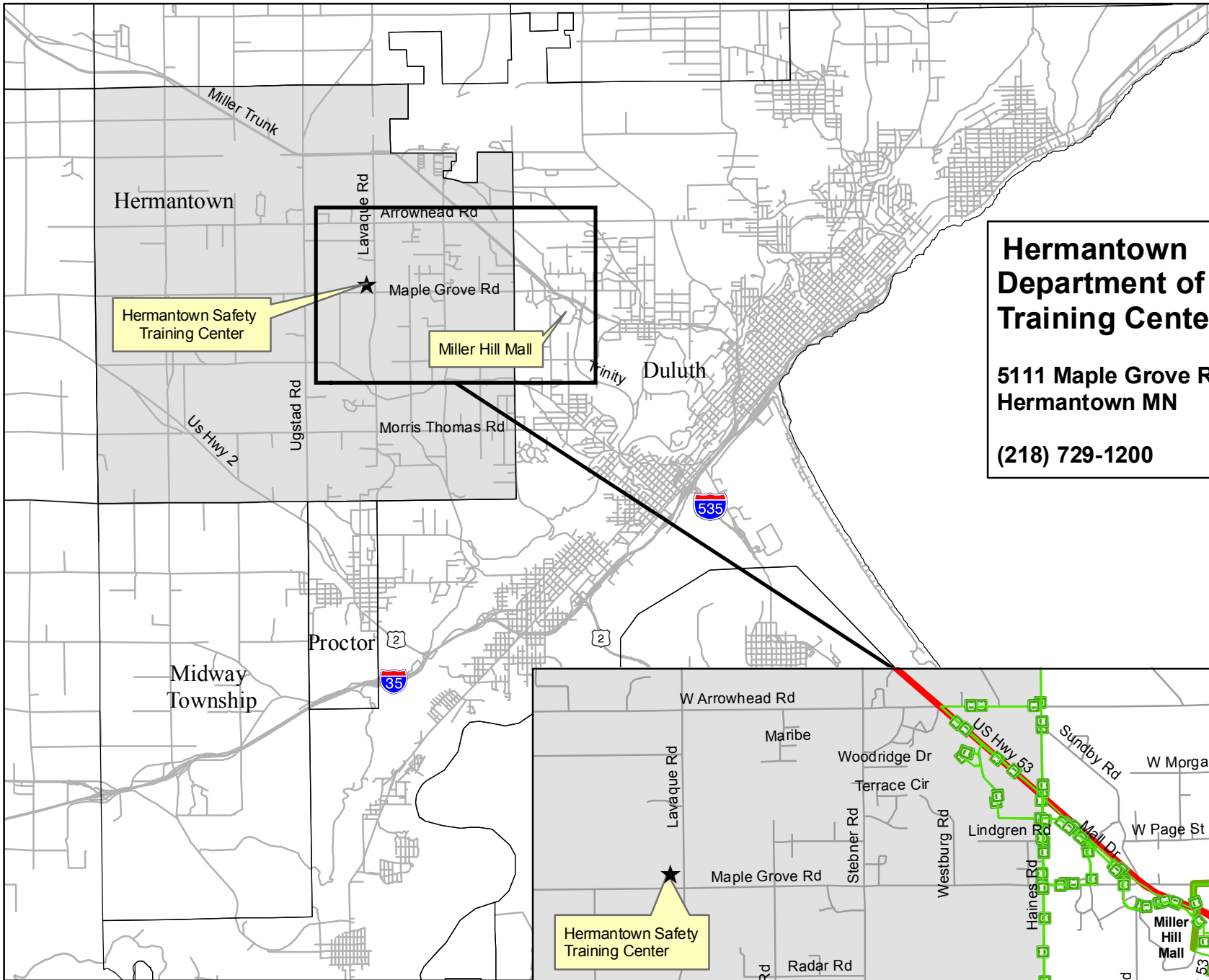
Discussion / Informational Items:

- Downtown Duluth Modal Connections Study
- East Second Street Study

Driving Directions & Parking Information: *See map on next page*

Attendance for Meetings:

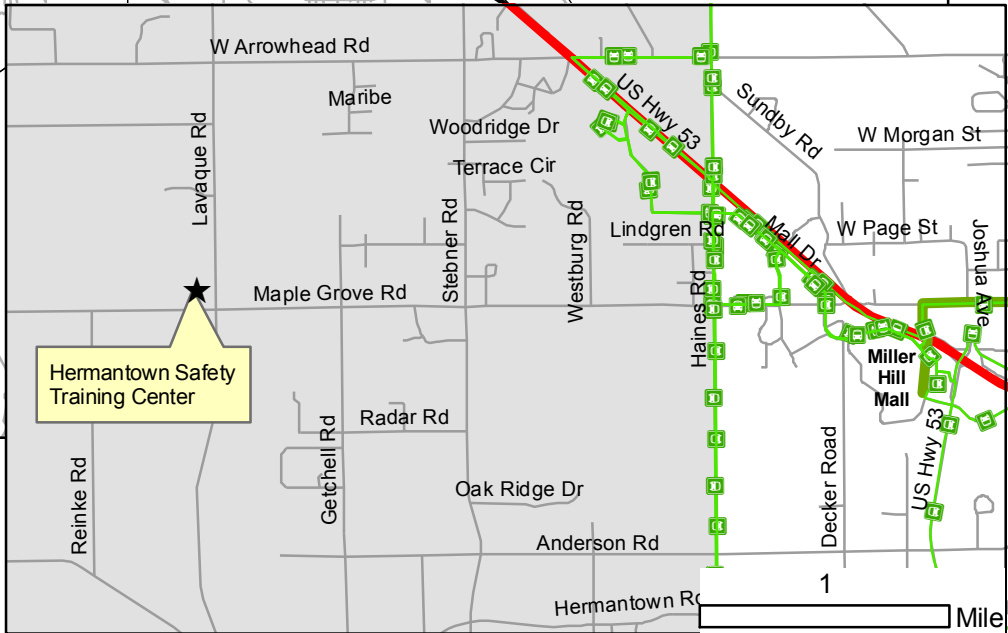
If you are NOT able to attend, or expect to arrive late to the meeting, **please contact Rondi Watson at rwatson@ardc.org or 529-7541** to ensure a quorum will be present for voting items on the agenda



**Hermantown
Department of Public Safety
Training Center**

**5111 Maple Grove Rd
Hermantown MN**

(218) 729-1200



Legend

DTA Bus Route

Bike Routes

Primary On-Street Unsigned Route

Bicycling Prohibited or Not Recommended



1

Mile

**TRANSPORTATION ADVISORY
COMMITTEE (TAC)
MEMBERS**

Airport

Brian Ryks
Susan Thompson (alternate)

Bikes / Pedestrians

Bryn Jacobson

City of Duluth

Jim Benning
Chuck Froseth
Cari Pedersen
Cindy Voigt (alternate)
Vacant

City of Hermantown

David Salo
Lynn Lander (alternate)

City of Proctor

Vacant

City of Superior

Jason Serck
Jeff Goetzman

Douglas County

Paul Halverson

Duluth Transit Authority

Dennis Jensen
Jim Heilig (alternate)

MN DEED Office

Heather Rand

MnDOT

Denny Johnson, *Chair*
Walter Leu

Ports

Jim Sharrow

St. Louis County

Jim Foldesi
Brian Boder (alternate)

WisDOT NW Region

Dena Ryan, *Vice-chair*
Jeff Emerson (alternate)

DULUTH-SUPERIOR
METROPOLITAN INTERSTATE COUNCIL

TRANSPORTATION ADVISORY COMMITTEE MEETING

Tuesday, June 17, 2008 at 1:30 p.m.

Hermantown Public Safety Bldg – Training Center
Hermantown, MN

AGENDA

| | |
|---|---------------|
| Introductions / Agenda Review | <i>5 min</i> |
| 2. Committee Business <ul style="list-style-type: none"> • TAC Meeting Summary of May 20, 2008 • Meeting Schedule Changes – Aug/Sept 2008 • MN MPO Director’s Meeting – 8/12/08 Open Session Invite | |
| 3. 2008-2011 Superior Area TIP Amendment #5 <ul style="list-style-type: none"> • Review for Approval, <i>James Gittemeier</i> | <i>10 min</i> |
| 4. Long Range Transportation Plan 2035 Update – Scope of Work <ul style="list-style-type: none"> • Review for Approval, <i>Robert Herling</i> | <i>10 min</i> |
| 5. Hermantown Section 13 Traffic Impact Study <ul style="list-style-type: none"> • Presentation and Discussion, <i>James Gittemeier</i> | <i>10 min</i> |
| 6. Downtown Duluth Modal Connections Study <ul style="list-style-type: none"> • Presentation and Discussion, <i>Holly Butcher</i> | <i>10 min</i> |
| 7. East Second Street Study <ul style="list-style-type: none"> • Presentation and Discussion, <i>Robert Herling</i> | <i>10 min</i> |
| 8. Roundtable Discussion – Local Projects | <i>5 min</i> |
| 9. Project Updates And Informational Items <ul style="list-style-type: none"> • Northern MN/Northeastern WI Freight Study, <i>Ron Chicka</i> • Draft 2009-2012 Duluth Area TIP, <i>James Gittemeier</i> | <i>5 min</i> |

TAC Agenda Topics and Project Updates

June 17, 2008 Meeting



Transportation Advisory Committee

* = Approval Item

1. INTRODUCTIONS / AGENDA REVIEW

2. COMMITTEE BUSINESS

- **Meeting Summary of May 20, 2008** (attached, p. 8) *
- **Rescheduled August and September TAC Meetings**

Due to commitments to organize, present at and attend state and regional planning conferences, the majority of our staff will be unable to attend the regularly-scheduled meetings in August and September. **Please cancel the August 20th and September 16th meetings on your calendars and note the rescheduled dates:**

Tuesday, September 2nd

TAC meeting

1:30 p.m.

Proctor Community Center

Wednesday, September 3rd

5:30 p.m. — Catered picnic supper

7:00 p.m. — Annual joint MIC and TAC meeting with guest speaker

Proctor Community Center

The regular 2008 TAC schedule will resume with meetings on October 14 and December 9.

- **MN MPO Director's Meeting – Invitation to 8/12/08 Open Session**

The MIC is hosting the Minnesota MPO Director's Workshop, an annual three-day forum for MPO and MnDOT planning staff from across the state. This year, we are opening up the second day to the MIC Board and TAC members to attend our planned keynote presentation and panel discussions.

The topic for the morning session is Community Sustainability. Hennepin County Commissioner Peter McLaughlin, chair of a new joint powers board (Counties Transit Improvement Board), will give the keynote presentation; he will speak to the importance as well as the process of regional planning and appropriate investment for transportation.

Congressman Jim Oberstar has been invited to participate as part of the afternoon session covering the next federal transportation bill – the successor to SAFETEA-LU. Panel members will include Peter Ruane, President of the American Road and Transportation Builders Association, and Jack Schenendorf, Vice Chair of the National Surface Transportation Policy and Review Study Commission. In addition, we will

TAC Agenda Topics and Project Updates

June 17, 2008, continued

feature a presentation from the national association of MPOs (in Washington D.C.) covering their perspectives on legislative for the next federal bill.

We hope you can join us. Please mark the date on your calendar and RSVP to Rondi Watson (218) 529-7541 or rwatson@ardc.org.

3. 2008-2011 SUPERIOR AREA TIP AMENDMENT #5

It is necessary to consider an amendment to add a project for inclusion in the 2008-2011 Superior Urbanized Area TIP. **Amendment #5** adds a project to begin in CY 2008. It is the design phase for a pavement replacement project along USH 2 from the St. Louis River to Belknap Street. The project will include bridge deck overlay, modular joint replacement, spot repair on parapet, and replace the outside foot of sidewalk. Some cable work and light replacements will also be done. (Note, the construction phase of this project is planned to be included in the 2014 TIP).

2008 Transportation Improvement Project (Roadway)

| Jurisdiction and Project Number | Project Description | Type of Cost | Estimated Costs & Funding Sources in Thousands | | | |
|---------------------------------|--|--------------|--|-------|-------|-------|
| | | | Federal | State | Local | Total |
| WisDOT 113-08-013 | USH 2 -St. Louis River to Belknap St. pavement replacement 8680-04-04 (design) 3-R | PE ROW CONST | 120 | 30 | | 150 |
| | | TOTAL | 120 | 30 | | 150 |

2014 Transportation Improvement Project (Roadway) – Illustrative Only

| Jurisdiction and Project Number | Project Description | Type of Cost | Estimated Costs & Funding Sources in Thousands | | | |
|---------------------------------|---|--------------|--|-------|-------|-------|
| | | | Federal | State | Local | Total |
| WisDOT 113-08-013 | USH 2 -St. Louis River to Belknap St. pavement replacement 8680-04-74 (const) 3-R | PE ROW CONST | 1,150 | 288 | | 1,438 |
| | | TOTAL | 1,150 | 288 | | 1,438 |

If you have any questions regarding this project, please contact Sheldon Johnson at sjohnson@nwrpc.com or (715) 635-2197.

TAC Agenda Topics and Project Updates

June 17, 2008, continued

4. LONG RANGE TRANSPORTATION PLAN 2035 UPDATE – SCOPE OF WORK (attached, p. 13) *

The MIC's current long range plan (LRTP), Access and Mobility for People and Freight 2030, is scheduled to be updated in 2009. Due to new direction coming from the Federal Highway Administration (FHWA) and Minnesota Department of Transportation (MnDOT), the updated plan will be produced as a web-based document. The main benefit of moving towards a web-based plan is to make it more accessible to a greater audience and make it easier for a user to navigate through when in search of specific information. This plan will exist as a website separate from the existing agency website.

The MIC has developed a Scope of Work for the upcoming update (see pages that follow). It includes a table summarizing the conceptual structure of the website, as well as a timeline that outlines the work activities that will be involved in updating the LRP. If you have you comments or questions, please contact Robert Herling at rherling@ardc.org or (218) 529-7573.

5. HERMANTOWN-SECTION 13 TRAFFIC IMPACT STUDY

The City of Hermantown requested the MIC to revisit the Hermantown-Section 13 Circulation Analysis Report due to significant development changes in the study area. Specifically, there is a plan for a large expansion of multiple family housing units along Westberg Road. The MIC teamed up with URS Corporation to conduct this traffic circulation analysis, which includes a number of traffic modeling scenarios focused on the internal circulation movements within Section 13.

The study examined 6 scenarios regarding creating an alternative ingress/egress for Westberg Road. The 6 scenarios include:

1. Westberg Rd to Mall Drive extension
2. Westberg Rd to Miller Trunk Hwy (right turn only on US Hwy 53)
3. Westberg Rd to Mall Drive extension & right turn only on US Hwy 53
4. Westberg Rd to Mall Drive extension & right turn on Hwy 53 & Woodridge connection to Stebner Rd
5. Westberg Rd to Mall Drive extension & right turn on Hwy 53 & Terrace Circle connection to Stebner Road.
6. Do nothing – no secondary access for Westberg Rd.

Work on this traffic impact study began in April, with major work activities concluded by the first week of June. If you have you comments or questions, please contact James Gittemeier at jgittemeier@ardc.org or (218) 529-7556.

6. DOWNTOWN DULUTH MODAL CONNECTIONS STUDY

The Downtown Duluth Modal Connections Study will conduct a technical analysis of existing transportation conditions between Canal Park, the Duluth Entertainment

TAC Agenda Topics and Project Updates

June 17, 2008, continued

Convention Center (DECC) / Bayfront Park, and Downtown Duluth (central business district or CBD). Existing barriers and interaction will be reviewed between these three locations. At the June meetings MIC staff will provide an update on this project. If you have you comments or questions, please contact Holly Butcher at holly.butcher@ardc.org or (218) 529-7548.

7. EAST SECOND STREET STUDY

Access management is an important focus of this study and, after assessing much of the corridor in this vein, it has been determined that the study area should be extended further south to 53rd Avenue. A study committee is now being formed to help further direct the rest of this study, which is expected to require a lot of additional data-gathering activities for the summer of 2008. If you have you comments or questions, please contact Robert Herling at rherling@ardc.org or (218) 529-7573.

8. PROJECT UPDATES

Northern MN/Northeastern WI Freight Study, *Ron Chicka*

Next month we anticipate putting the scope of work forward for review and approval to the TAC and MIC. Andy McDonald and I have continued to coordinate meetings with Wisconsin and Minnesota DOT staff and Regional Planning staff at ARDC aimed at work scope development, tasks and key stakeholder involvement. It has been decided that project management will be jointly coordinated between the MIC and Mn/DOT central office personnel. Dave Christianson is the new Mn/DOT Freight Planning Manager and will play a large role in the project from start to finish. He comes to the position most recently from the private sector and has a great deal of experience in projects such as this. With the exception of the undetermined WisDOT funding source for the project, all others are still solid - \$200,000 from Mn/DOT Central Office and \$50,000 over two years from the MIC for hiring of a consultant.

Draft 2009-2012 Duluth Metro TIP, *James Gittemeier*

MIC staff held a public information session at the Holiday Center on Wednesday, June 4, 2008 from 11:30am to 1:30pm. Staff will be working with the area jurisdictions as they update their project lists and financial capacity information. The format of the document continues to be updated and the major changes to the document will be reviewed in detail at the July MIC & TAC meetings. The final 2009-2012 Duluth Metro TIP will be presented at those meetings for approval.

Phase 2 On-Street Bike Route Signage, *James Gittemeier*

MIC staff has been assisting the City of Duluth with the implementation of the bike signage project, including the inspections of the signage. Staff will also be gathering GPS data on the location of each sign in order to create a database.



Duluth-Superior Metropolitan Interstate Council
Transportation Advisory Committee

Meeting Summary
May 20, 2008

| | | |
|------------------|--------------------------------------|------------------------------|
| Meeting Location | WITC Conference Center, Superior, WI | |
| Meeting Chair | Denny Johnson | |
| Note Taker | Rondi Watson | |
| Members Present | Jeff Goetzman | City of Superior |
| | Chuck Froseth | City of Duluth |
| | Jim Heilig | Duluth Transit Authority |
| | Denny Johnson | Mn/DOT District 1 |
| | Walter Leu | Mn/DOT District 1 |
| | Cari Pedersen | City of Duluth |
| | Dena Ryan | WisDOT NW Region |
| | David Salo | City of Hermantown |
| | Jason Serck | City of Superior |
| | Susan Thompson | Duluth Airport Authority |
| | Cindy Voigt* | City of Duluth |
| Members Absent | Jim Benning | City of Duluth |
| | Jim Foldesi | St. Louis County |
| | Paul Halverson | Douglas County |
| | Bryn Jacobson | Bike/Pedestrian Rep |
| | Heather Rand | Mn DEED |
| | Jim Sharrow | Duluth Seaway Port Authority |
| Others Present | Holly Butcher | ARDC / MIC Senior Planner |
| | Ron Chicka | ARDC / MIC Director |
| | Andrea Grygo Diamond | ARDC / MIC GIS Specialist |
| | James Gittemeier | ARDC / MIC Associate Planner |
| | Lora Skarman | ARDC / MIC Intern |
| | Rondi Watson | ARDC / MIC Secretary |
| | * Alternate | |

1. Introductions and Agenda Review

TAC Chair Denny Johnson called the meeting to order at 1:33 p.m. and meeting attendees introduced themselves. No changes to the agenda were put forward.

2. Committee Business – Meeting Summary of April 16, 2008

Motion and Discussion Chuck Froseth/Jim Heilig moved to approve the meeting summary from the April 16, 2008 meeting. There was no discussion and the motion was approved unanimously.

3. Amendment #9 to the 2008-2011 Duluth Area Transportation Improvement Program (TIP)

James Gittemeier reported that St. Louis County had applied for and received a grant for federal transportation planning funds administered by the MN Historical Society. The grant will fund a study of adaptive reuse of the Duluth Depot in conjunction with new passenger rail service. Potential uses include office, retail, possibly even residential. The funding includes \$140,000 from Federal Highway, with a local match by St. Louis County of \$45,000 for total project cost of \$185,000, which needs to be amended into the current Duluth Area TIP for 2009 funding. Walter Leu clarified that although this project was awarded outside the regular TIP project process, it still needs to be included in the TIP because it will be using federal funds.

Motion and Discussion Jason Serck/Chuck Froseth moved to approve the amendment to the 2008-2011 Duluth Area Transportation Improvement Program as presented. There was no discussion and the motion was approved unanimously.

4. 2009-2012 Duluth Area Transportation Improvement Program - DRAFT

James Gittemeier presented the draft Transportation Improvement Program (TIP) for FY 2009-2012 projects in the Duluth urbanized area. He reported that the format for this TIP was being overhauled with the goal of making it more user-friendly and more understandable by the general public. After the draft is released for the mandatory 30-day comment period, he will begin the air quality conformity consultation with FHWA, MPCA and MnDOT Central Office.

He noted that the funding level is significantly higher in FY 2009 and 2010, reflecting the additional projects funded by SAFETEA-LU.

The final TIP is scheduled to be completed in July.

Motion and Discussion Chuck Froseth/Jason Serck moved to recommend to the MIC that the 2009-2012 Duluth Area Transportation Improvement Program be released for the mandated 30-day comment period. There was no discussion and the motion was approved unanimously.

5. Overview of ArcGIS Server

Andrea Grygo Diamond, the MIC's Geographic Information Systems (GIS) Specialist, reported that ARDC had recently purchased new server hardware and ArcGIS Server software to make maps available online. The current maps on the website are static (users can basically just view and print them), but by using ArcGIS Server the MIC's maps will be dynamic and available through a web browser, allowing the user to view a customized map.

6. Proctor Comprehensive Plan

Holly Butcher reported that she and James had facilitated a Community Visioning session on May 13th. She explained that this session was intended to involve the community in the update of Proctor's Comprehensive Plan. They conducted a group process to identify the City's assets and opportunities and to develop a vision statement to guide the overall planning

process. Themes that emerged from this discussion included: Proctor's prominent location on top of the hill, recreation, safety, schools & life long learning, and "green" approaches to new development. The update of the Plan is expected to be completed by the end of this year.

7. UMD-CSS Transportation Study

Andy McDonald reported that he had recently conducted two public meetings, structured as "issues identification" sessions where participants broke out to tables with large aerial photos of the study area to write or draw their concerns about transportation issues in the study area. Many comments were received relating to pedestrian, bike and transit issues as well as roadway concerns.

An online survey of all faculty, staff and students from each campus was also administered and got a good level of response. Comments in the open-ended question section mostly focused on parking problems on campus. Survey results will be analyzed to determine distances traveled and modes used, and to identify differences in the travel patterns of faculty/staff and students. GIS analysis will be used to compare student residence locations with routes taken.

An analysis of sidewalk snow removal in the surrounding neighborhood had also been conducted, giving a good idea of what sidewalks never get cleared and reinforcing the common complaint that the snow removal ordinance is not being enforced.

Finally, he reported that staff had also conducted a cut-through traffic analysis, observing traffic movements through the adjacent neighborhood at peak morning and afternoon travel times. The highest rate of cut-through traffic was observed on Lawn Street, with 87% of vehicles cutting through, with an especially high volume of traffic in the afternoon.

8. Bike to Work Day and Bike Planning Update

James Gittemeier reported that Bike to Work Day was Friday, May 16, and ARDC, along with the YMCA, the DTA and the Greater Downtown Council, had sponsored a morning commute event for bicyclists at the Minnesota Plaza from 7am to 9am. He got a fair amount of media attention and participation was good.

He also reported that Phase 2 Bike Route signs (about 330 total) have been installed in Duluth, Proctor and St. Louis County. Final inspection of the installed signage should be completed by the end of the month.

He also reported that a new initiative by the DTA is underway to improve its transit stops, which will include a type of parking meter that will also incorporate bicycle parking.

9. Roundtable Discussion

Dena Ryan reported that all truss bridges in the state are required to be analyzed for load-bearing capacity and that the Blatnik Bridge inspection is being conducted in a joint cooperative effort between MnDOT and WisDOT. **Walter Leu** added that the gusset plates are in fine shape, they just need to be upgraded to meet new safety standards.

Susan Thompson reported that last-minute legislative action cut \$15 million from the State Airports Fund, to take effect in fiscal year 2009 which begins July 1. This funding cut will severely restrict the Duluth Airport's plans for redevelopment projects in support of Monaco Air, Cirrus Design, Lake Superior College and other prospective aviation businesses. Since the fund comes from mandated aircraft and aviation-related taxes and fees, and was created for the purpose of infrastructure and safety improvements and maintenance, it seems inappropriate for the state to cut it to fulfill other budgetary needs. She noted that airport and city officials will be lobbying the governor and the state legislature to restore the fund.

Jason Serck reported that the Moccasin Mike Trail enhancements project was not approved but instead was tabled by the MIC at last month's meeting. The project had been submitted anyway to meet the deadline, but a city staff person will attend this month's Policy Board meeting to answer questions and provide explanations, hopefully the MIC will recommend the project this time.

Cari Pedersen reported that Airport Road will be repaved between Rice Lake Road and Haines Road, requiring the detour of traffic near the Duluth Air National Guard base. The detour is expected to be in place through mid-July.

Denny Johnson reported that public meetings will be held in June to receive comment on the statewide Transportation Plan.

10. Project Updates

Long Range Transportation Plan 2035

Ron Chicka reported that the MIC is beginning the process of updating the Duluth-Superior Long Range Transportation Plan (LRTP) and the Scope of Work to be presented at the June TAC and MIC meetings. It will be updated as a web-based document, providing as much information as possible in a visual format and cutting down on the amount of text, with the goal of making it easier to navigate and utilize. Revisions will be presented on a chapter-by-chapter basis to the TAC and MIC for comment and input.

East Second Street Study

Ron also reported that a number of initial tasks have been accomplished so far for this study, including the initial data gathering, access inventory, and crash analyses. An on-site assessment of the study area raised some considerations for extending the study further south along East 2nd Street, and MIC staff met with the City of Superior to revisit the objectives of the study and reassess the study boundaries. Also at this meeting, the make up of a steering committee was discussed, and a public involvement action plan was established.

WisDOT Safe Routes to School

Holly Butcher reported that she had been asked to participate on the WisDOT Safe Routes to School state-wide project selection committee. The MIC's early involvement in developing several SRTS studies prompted WisDOT's request that we be involved in helping to select quality projects submitted for the current grant cycle.

On May 9th, WisDOT hired a consultant to conduct a safe biking workshop as an

implementation activity of their non-infrastructure grant.

Also, she reported that only half of the Congdon project, as originally envisioned, will be implemented due to changes from the school district's Red Plan.

Endion Land Use and Transportation Plan

Holly reported that the final Endion Transportation and Land Use Plan, after its approval at the April TAC and MIC meeting, was presented to the planning district in April. A public forum and panel discussion will be held on May 22nd at 7:00 p.m. at First Lutheran Church. The final document can be viewed at www.dsmic.org/endion.

Freight Planning Study

Ron announced that MnDOT had hired a new manager of the Freight Office, and discussions have begun again about getting the long-planned freight study for NE MN/NW WI underway. Now, however, there appear to be problems with funding and staffing from WisDOT – funds available in 2008 may not be available in 2009. He commented that not having Wisconsin participation would compromise the final results somewhat.

11. Adjournment

With no further agenda items or announcements, Chair Johnson adjourned the meeting at 3:04 pm

Duluth-Superior Long Range Transportation Plan 2035

SCOPE OF WORK

June 2008

Introduction:

The Duluth-Superior Metropolitan Interstate Council (MIC) is the federally-designated Metropolitan Planning Organization (MPO) for the Duluth-Superior urbanized area. As such, its role is to provide guidance to local jurisdictions on transportation and land use interactions in the Twin Ports. Such guidance is based on the goals and objectives outlined in a 20-year transportation plan that is developed in partnership with the local jurisdictions and updated every four years.

The MIC's current long range plan, *Access and Mobility for People and Freight 2030*, is scheduled for an update in 2009, and due to new direction coming from the Federal Highway Administration (FHWA) and Minnesota Department of Transportation (MnDOT), the updated plan will be produced as a web-based document. The main benefit of moving towards a web-based plan is to make it more accessible to a greater audience and make it easier for a user to navigate through when in search of specific information.

Below are a few topics, among many others, that the plan will examine:

- Necessary adjustments to population, employment, and traffic predictions.
- Functional classification changes.
- Update of the TRANPLAN model (travel-demand model) to identify current and future deficiencies in the road network.
- Identified transportation priorities of the Duluth-Superior metro.
- Incorporating major recommendations from recent planning studies that have taken place since the last update.
- Safety, efficiency, connectivity, fiscally constrained projects, and performance-based measures.
- Implementation strategies for the plan's recommendations.

The long range planning effort will conclude in September 2009 with the launching of a web-based plan.

Outline of the Planning Process:
(May 2008 to September 2009 timeline)

I. Website Development

II. Plan Introduction (website's homepage)

- a) Page format & navigation bar
- b) *What is the LRTP and why is it important?*
- c) LRTP mission statement

III. Transportation System Assessment

- a) Update of transportation analysis zones (TAZs)
 - Land use component
 - Road network component
- b) Evaluate annual average daily traffic (AADT) data – (modify as needed)
- c) Travel-demand model update & calibration
- d) Consideration of recent micro-modeling from recent plans
- e) System management for people & freight
- e) Multimodal facilities & connectivity assessment

VI. Planning & Policy Framework

- a) Federal requirements
- b) Align with updated state LRTPs & the Federal Surface Policy & Revenue Study Commission recommendations
- c) Demographic, land use, transportation and funding trends
- d) Public participation
- e) Complete Streets, Livable Communities, Community Impact Assessment, Smart Growth, Sustainability & the environment
- f) Goals & objectives

V. Transportation Operations & Maintenance

- a) Operations & maintenance for people & freight
- b) Identify short and mid-range transportation needs
- c) Transportation systems management (TSM)
 - Congestion & air quality maintenance
 - Safety, emergency response & system security
 - Intelligent transportation systems (ITS)
 - The MIC TSM analysis
- d) Transportation planning & programming
 - MN & WI programming processes
 - MIC area transportation priorities & funding constraints

VI. Project List & Map

- a) Project identification
- b) Assessing projects with performance measures and goals & objectives
- c) Redefining projects through fiscal constraint

VII. Plan Evaluation & Implementation

- a) Recommendations
- b) Implementation strategies
- c) Community impact assessment (CIA)

Proposed Outline of the Web-based Long Range Transportation Plan 2035

| PROJECTS | PLANNING | TRENDS | PERFORMANCE | PARTICIPATION |
|--|--|---|---|---|
| <ul style="list-style-type: none"> • Proposed projects (transit-related, bike & ped-related, safety-related, etc.) • Project map | <ul style="list-style-type: none"> • MIC responsibilities • Fed & state regulations and policies • TIP process • Goals & objectives • MIC & TAC boards • Organizational cooperation (e.g. environ. coordination, and coordinated human services transportation plan) • Recommendations from the MIC & TAC | <ul style="list-style-type: none"> • Population & demographics • Travel patterns • Freight patterns • Congestion • Safety & Security • Mobility & Connectivity • Economics & Transportation • Infrastructure lifespan & Maintenance • Transportation funding • Transportation & environment (e.g. air quality, fuel & energy, storm water runoff) | <ul style="list-style-type: none"> • Mobility, Connectivity, jobs/services accessibility (transit service areas & ridership, completed bike networks, etc.) • Congestion (LOS) • Safety (critical crash rates) • Bridge & Pavement Conditions (???) • Air quality, fuel consumption (VMT). • Financial constraint (Cost/Benefit) • Past project implementation (% completion) | <ul style="list-style-type: none"> • Recommendations from the public • Opportunities to comment on the LRP • Opportunities to participate in transportation planning • PIP plan |

