

# MEETING NOTICE



## TRANSPORTATION ADVISORY COMMITTEE

*Tuesday, July 15, 2008 at 1:30 p.m.*

WITC Conference Center  
600 North 21<sup>st</sup> Street  
Superior, WI

### Action Items / Review for Approval:

- No. MN/NW WI Regional Freight Study – Scope of Work
- 2009-2012 Duluth Area Transportation Improvement Program (Final)

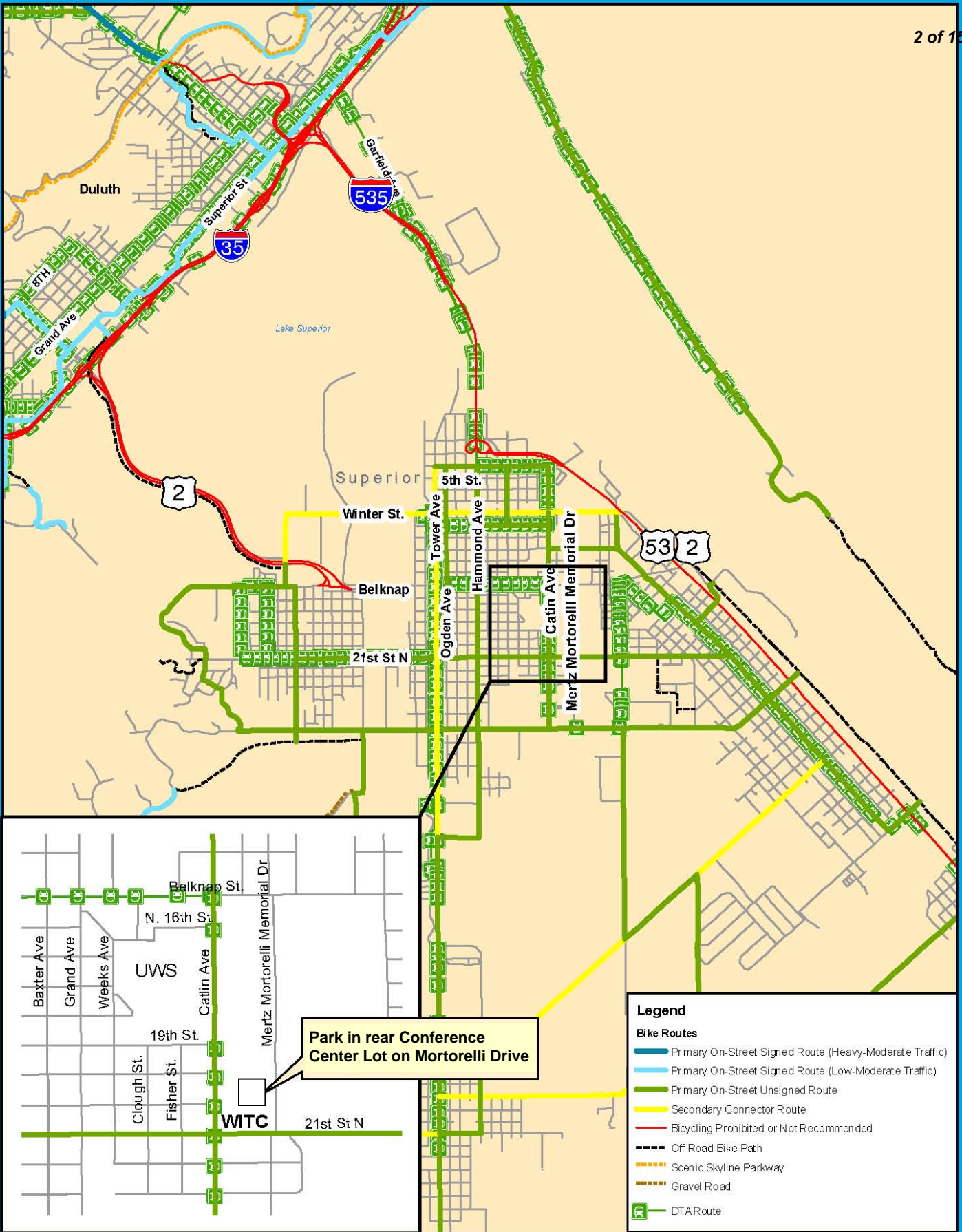
### Discussion / Informational Items:

- UMD-CSS Transportation Assessment
- Proctor Comprehensive Plan – SRTS Component
- Long Range Plan 2035 Update
- HTAC/Harbor Planning Update

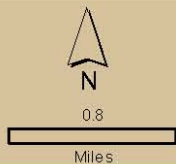
**Driving Directions & Parking Information:** *See map on next page*

### Attendance for Meetings:

If you are NOT able to attend, or expect to arrive late to the meeting, **please contact Rondi Watson at [rwatson@ardc.org](mailto:rwatson@ardc.org) or 529-7541** to ensure a quorum will be present for voting items on the agenda



**Park in rear Conference Center Lot on Mortorelli Drive**



**WITC Conference Center**  
 Wisconsin Indian Technical College  
 600 North 21st St - Superior, WI



**TRANSPORTATION ADVISORY  
COMMITTEE (TAC)  
MEMBERS**

**Airport**

Brian Ryks  
Susan Thompson (alternate)

**Bikes / Pedestrians**

Bryn Jacobson

**City of Duluth**

Jim Benning  
Chuck Froseth  
Cari Pedersen  
Cindy Voigt (alternate)  
Vacant

**City of Hermantown**

David Salo  
Lynn Lander (alternate)

**City of Proctor**

Jim Rohweder

**City of Superior**

Jason Serck  
Jeff Goetzman

**Douglas County**

Paul Halverson

**Duluth Transit Authority**

Dennis Jensen  
Jim Heilig (alternate)

**MN DEED Office**

Heather Rand

**MnDOT**

Denny Johnson, *Chair*  
Walter Leu

**Ports**

Jim Sharrow

**St. Louis County**

Jim Foldesi  
Brian Boder (alternate)

**WisDOT NW Region**

Dena Ryan, *Vice-chair*  
Jeff Emerson (alternate)

DULUTH-SUPERIOR  
METROPOLITAN INTERSTATE COUNCIL

**TRANSPORTATION ADVISORY COMMITTEE MEETING**

***Tuesday, July 15, 2008 at 1:30 p.m.***

WITC Conference Center  
Superior, WI

**AGENDA**

<b>Introductions / Agenda Review</b>	<i>5 min</i>
<b>2. Committee Business</b> <ul style="list-style-type: none"> <li>• TAC Meeting Summary of June 17, 2008</li> <li>• Meeting Schedule Changes – Aug/Sept 2008</li> <li>• MN MPO Director’s Meeting – 8/12/08 Open Session Invite</li> </ul>	
<b>3. Northern MN/Northwestern WI Freight Study – Scope of Work</b> <ul style="list-style-type: none"> <li>• Review for Approval, <i>Andy McDonald</i></li> </ul>	<i>15 min</i>
<b>4. 2009-2012 Duluth Area TIP(Final)</b> <ul style="list-style-type: none"> <li>• Review for Approval, <i>James Gittemeier</i></li> </ul>	<i>10 min</i>
<b>5. UMD-CSS Transportation Assessment</b> <ul style="list-style-type: none"> <li>• Presentation and Discussion, <i>Andy McDonald</i></li> </ul>	<i>15 min</i>
<b>6. Proctor Comprehensive Plan – SRTS Component</b> <ul style="list-style-type: none"> <li>• Presentation and Discussion, <i>Holly Butcher</i></li> </ul>	<i>15 min</i>
<b>7. Long Range Plan 2035 Update</b> <ul style="list-style-type: none"> <li>• Presentation and Discussion, <i>Robert Herling</i></li> </ul>	<i>15 min</i>
<b>8. HTAC/Harbor Planning Update</b> <ul style="list-style-type: none"> <li>• Presentation and Discussion, <i>Andy McDonald</i></li> </ul>	<i>10 min</i>
<b>9. Roundtable Discussion – Local Projects</b>	<i>5 min</i>
<b>10. Project Updates And Informational Items</b> <ul style="list-style-type: none"> <li>• East Second Street Study, <i>Robert Herling</i></li> <li>• MN MPO Summer Workshop, <i>Ron Chicka</i></li> <li>• MIC Mid-Year Review, <i>Ron Chicka</i></li> <li>• 2009-2010 MIC Work Plan and Budget, <i>Ron Chicka</i></li> </ul>	<i>5 min</i>

# TAC Agenda Topics and Project Updates

July 15, 2008 Meeting



## Transportation Advisory Committee

\* = Approval Item

### 1. INTRODUCTIONS / AGENDA REVIEW

### 2. COMMITTEE BUSINESS

- **Meeting Summary of June 17, 2008** (attached, p. 8) \*
- **Rescheduled August and September TAC Meetings**

Due to commitments to organize, present at and attend state and regional planning conferences, the majority of our staff will be unable to attend the regularly-scheduled meetings in August and September. **Please cancel the August 20<sup>th</sup> and September 16<sup>th</sup> meetings on your calendars and note the rescheduled dates:**

#### **Tuesday, September 2<sup>nd</sup>**

TAC meeting

1:30 p.m.

Proctor Community Center

#### **Wednesday, September 3<sup>rd</sup>**

5:30 p.m. — Catered picnic supper

7:00 p.m. — Annual joint MIC and TAC meeting with guest speaker

Proctor Community Center

The regular 2008 TAC schedule will resume with meetings on October 14 and December 9.

- **MN MPO Summer Workshop for Directors and Planners – 8/12/08 Open Session**  
The MIC is hosting the Minnesota MPO Director's Workshop, an annual three-day forum for MPO and MnDOT planning staff from across the state. This year, we are opening up the second day to the MIC Board and TAC members to attend our planned keynote presentation and panel discussions.

The topic for the morning session is Community Sustainability. Hennepin County Commissioner Peter McLaughlin, chair of a new joint powers board (Counties Transit Improvement Board), will give the keynote presentation; he will speak to the importance as well as the process of regional planning and appropriate investment for transportation.

Congressman Jim Oberstar has been invited to participate as part of the afternoon session covering the next federal transportation bill – the successor to SAFETEA-LU. Panel members will include Peter Ruane, President of the American Road and Transportation Builders Association, and Jack Schenendorf, Vice Chair of the National Surface Transportation Policy and Review Study Commission. In addition, we will

## TAC Agenda Topics and Project Updates

July 15, 2008, continued

feature a presentation from the national association of MPOs (in Washington D.C.) covering their perspectives on legislative for the next federal bill.

We hope you can join us. Please mark the date on your calendar and RSVP to Rondi Watson (218) 529-7541 or [rwatson@ardc.org](mailto:rwatson@ardc.org).

### 3. NORTHERN MN/NORTHWEST WI FREIGHT STUDY – SCOPE OF WORK (attached, p.13) \*

The Northern Minnesota/Northwest Wisconsin Freight Study will be a multimodal comprehensive look at freight movement throughout the region, prompted by freight movement issues facing the region including mine and refinery expansions, opportunities to develop an intermodal terminal, wind energy equipment moving both ways through the port, and large pieces of equipment coming through the port onto rail and truck. The study will describe the freight system, identify industry trends, identify key deficiencies, describe opportunities, conduct public outreach and develop recommendations. It will provide a better understanding of the demands from freight placed on the regional transportation infrastructure and provide a framework to identify necessary improvements that will accommodate economic growth within the region. The geographic extent of the study will be MnDOT Districts 1 & 2 in northern Minnesota and approximately 5-6 counties in northwest Wisconsin. We may look beyond those boundaries for certain commodities. Please review the enclosed Scope of Work prior to our meetings. If you have you comments or questions, please contact Andy McDonald at [amcdonald@ardc.org](mailto:amcdonald@ardc.org) or (218) 529-7514.

### 4. 2009-2012 DULUTH METRO TRANSPORTATION IMPROVEMENT PROGRAM (FINAL) \*

The Duluth Metro TIP is completed and ready for final approval. Only a few comments were received on the TIP, largely focused on minor changes to project status and/or cost. An air quality conformity discussion with the MPCA, FHWA, and Mn/DOT, for the TIP took place on June 23 and a positive determination was made, noting the projects in the TIP will have no adverse impacts on air quality. Once the TIP is approved it moves onto Mn/DOT for their review and acceptance into the State TIP (STIP). If you have you comments or questions, please contact James Gittemeier at [jgittemeier@ardc.org](mailto:jgittemeier@ardc.org) or (218) 529-7556.

### 5. UMD-CSS TRANSPORTATION ASSESSMENT

Data collection continues as MIC staff is updating sidewalk and curb ramp inventories around both campuses. We have also been refining the results of the survey data and should be able to pull a large amount of information from the responses. Crash analysis has been completed on a number of intersections and road segments suggested by members of our study committee. If you have you comments or questions, please contact Andy McDonald at [amcdonald@ardc.org](mailto:amcdonald@ardc.org) or (218) 529-7514.

## TAC Agenda Topics and Project Updates

July 15, 2008, continued

### 6. PROCTOR COMPREHENSIVE PLAN — SAFE ROUTES TO SCHOOL COMPONENT

During May, MIC staff observed morning and afternoon transportation patterns around Bay View Elementary and Proctor Middle Schools. Student and parent survey data has been collected and analyzed as well. During the July meetings, I'll provide an update on this component of the Proctor Comprehensive Plan. If you have you comments or questions, please contact Holly Butcher at [holly.butcher@ardc.org](mailto:holly.butcher@ardc.org) or (218) 529-7548.

### 7. LONG RANGE PLAN 2035 UPDATE

Current economic trends, along with the reality of subsequent funding shortfalls, will require fiscally-constrained planning to be an emphasis of the Long Range Transportation Plan (LRTP) that we are updating for the Duluth-Superior metro. This will require further scrutiny of any projects to be included in the LRTP. The MIC will be meeting with jurisdictions in the near future to facilitate this discussion on a project-by-project basis and is currently investigating appropriate ways for critiquing how projects are to be determined as “fiscally constrained” versus “illustrative.” By way of example, we will examine a jurisdiction’s list currently in the LRTP and go through the procedure we will undertake to refine the list. If you have you comments or questions, please contact Robert Herling at [rherling@ardc.org](mailto:rherling@ardc.org) or (218) 529-7573.

### 8. HTAC/HARBOR PLANNING UPDATE

The HTAC meeting was held on Wednesday, June 4<sup>th</sup> at the Superior Public Library. The agenda included a description of the update to the Dredged Material Management Plan, the Duluth-Superior Harbor Corrosion Study, and the St. Louis River Area of Concern (AOC) Delisting Process. We also recognized a couple of new members, Nancy Larson from the Wisconsin DNR and Dan Weber from the Natural Resource Conservation Service. CDR Gary Croot, head of the US Coast Guard Duluth Marine Safety Unit, was also recognized as this was his last HTAC meeting before moving on to his new assignment in Washington DC. If you have you comments or questions, please contact Andy McDonald at [amcdonald@ardc.org](mailto:amcdonald@ardc.org) or (218) 529-7514.

### 9. PROJECT UPDATES

#### **East Second Street Study, Robert Herling**

MIC staff has conducted turning movement counts and collected ADT and speed data for a number of locations along the East 2<sup>nd</sup> Street corridor in Superior. In combination with information already collected, this data is being used to more specifically identify certain traffic patterns and better inform our understanding of potential issues which may exist along the corridor. A steering committee is being formed to help direct this study forward, and all of the information gathered to date will be presented to the committee members at an initial meeting planned to be held in July.

## TAC Agenda Topics and Project Updates

July 15, 2008, continued

### **MN MPO Summer Workshop for Directors and Planners, *Ron Chicka***

The MIC is hosting the Minnesota MPO Director's Workshop, an annual three-day forum for MPO and MnDOT planning staff from across the state. This year, we are opening up the second day to the MIC Board and TAC members to attend our planned keynote presentation and panel discussions on the topics of Community Sustainability and the upcoming transportation bill. Registration information is available from Rondi Watson, MIC Secretary, at (218) 529-7541 or [rwatson@ardc.org](mailto:rwatson@ardc.org).

### **MIC Mid-Year Review, *Ron Chicka***

MIC staff will hold its annual meeting with representatives from both the Minnesota and Wisconsin DOTs, Federal Highway and Federal Transit staff and DTA staff to discuss the administrative items and the many planning initiatives relevant to the MIC. This will be held on July 16<sup>th</sup> prior to the MIC Policy Board meeting that same night.

### **2009-2010 MIC Work Plan and Budget, *Ron Chicka***

In preparation for the 2009 – 2010 Work Program, I will be emailing out a simple survey to determine your preferences for a few additional discretionary projects that could be included in the second year (2010). Please reference the existing Work Program online or your hard copy to review projects already included.



Duluth-Superior Metropolitan Interstate Council  
TRANSPORTATION ADVISORY COMMITTEE  
**MEETING SUMMARY**  
**Tuesday, June 17, 2008, 1:30 PM**

<b>Meeting Location</b>	Public Safety Building Training Center, Hermantown, MN	
<b>Meeting Chair</b>	Denny Johnson	
<b>Note Taker</b>	Rondi Watson	
<b>Members Present</b>	Jim Foldesi	St. Louis County
	Chuck Froseth	City of Duluth
	Dennis Jensen	Duluth Transit Authority
	Denny Johnson	Mn/DOT District 1
	Cari Pedersen	City of Duluth
	Heather Rand	Mn DEED
	Dena Ryan	WisDOT NW Region
	David Salo	City of Hermantown
	Jason Serck	City of Superior
	Susan Thompson	Duluth Airport Authority
	Cindy Voigt*	City of Duluth
<b>Members Absent</b>	Jim Benning	City of Duluth
	Jeff Goetzman	City of Superior
	Paul Halverson	Douglas County
	Bryn Jacobson	Bike/Pedestrian Rep
	Walter Leu	Mn/DOT District 1
	Jim Sharrow	Duluth Seaway Port Authority
<b>Others Present</b>	Holly Butcher	ARDC / MIC Senior Planner
	Ron Chicka	ARDC / MIC Director
	Robert Herling	ARDC / MIC Associate Planner
	James Gittemeier	ARDC / MIC Planner
	Jim Rohweder	City of Proctor
	Lora Skarman	ARDC / MIC Intern
	Rondi Watson	ARDC / MIC Secretary
	* Alternate	

### 1. Introductions and Agenda Review

TAC Chair Denny Johnson called the meeting to order at 1:40 p.m. and meeting attendees introduced themselves. No changes to the agenda were put forward.

### 2. Committee Business – Meeting Summary of May 20, 2008

**Motion and Discussion** Chuck Froseth/Jason Serck moved to approve the meeting summary from the May 20, 2008 meeting. There was no discussion and the motion was approved unanimously.

## Committee Business - Announcements

### August and September Meetings Rescheduled for September 3, 2008

Ron Chicka announced that the MIC meetings on August 20 and September 17<sup>th</sup> were being cancelled due to staff unavailability both months, and rescheduled for a single meeting on Wednesday, September 3<sup>rd</sup>. This will be the annual joint MIC and TAC meeting, held at the Proctor Community Center at 7:00 pm, preceded by a catered picnic supper at 5:30 pm.

### MN MPO Summer Workshop – Invitation to Attend 8/12/08 Open Session

Ron announced that the MIC is hosting the annual Minnesota MPO Summer Workshop for Directors and Planners, an annual three-day forum for MPO and MnDOT planning staff from across the state. This year, MIC Board and TAC members are invited to attend the sessions on Tuesday, August 12 at no charge. The topic for the morning session is Community Sustainability, featuring a keynote address by Hennepin County Commissioner Peter McLaughlin, who will speak to the importance as well as the process of regional planning and investment for transit. Congressman Jim Oberstar has been invited to participate as part of the afternoon session covering the upcoming federal transportation bill. He added that Rondi Watson would be contacting MIC and TAC members by email with registration information.

### 3. Amendment #5 to 2008-2011 Superior Area TIP

James Gittemeier reported on an amendment, requested by WisDOT, to add a project for inclusion in the 2008-2011 Superior Urbanized Area TIP. Amendment #5 adds a project to begin in CY 2008, the design phase for a pavement replacement project on the approach section of USH 2 from the St. Louis River to Belknap Street. The project will include bridge deck overlay, modular joint replacement, spot repair on parapet, and replace the outside foot of sidewalk. Some cable work and light replacements will also be done. He added that the construction phase of this project is planned to be included in the 2014 TIP.

**Motion and Discussion** Jason Serck/Dena Ryan moved to approve Amendment #5 to the 2008-2011 Superior Area TIP as presented. No discussion, motion approved unanimously.

### 4. Long Range Plan 2035 Update Scope of Work

Robert Herling reported that the MIC's current Long Range Transportation Plan (LRTP), *Access and Mobility for People and Freight 2030*, is scheduled to be updated by 2009. Due to new guidance from the Federal Highway Administration (FHWA) and Minnesota Department of Transportation (MnDOT), the updated plan will be produced as a web-based document. The main benefit of moving towards a web-based plan is to make it more accessible to a greater audience and make it easier for a user to navigate through when in search of specific information. This plan will exist as a website separate from the existing dsmic.org website.

He presented the Scope of Work for the project, including a table summarizing the conceptual outline of the website and a timeline of work activities up to the project due date of September 2009. He noted that he planned to present related information at most of the upcoming monthly meetings to gain input from TAC and MIC members, in lieu of convening a separate LRTP advisory committee. Technical topics might require a meeting our two outside the usual

TAC and MIC meeting dates. He closed by requesting approval of the Scope of Work.

**Motion and Discussion** Chuck Froseth/Jim Foldesi moved to approve the Scope of Work for the LRTP Update as presented. No discussion, motion approved by unanimous vote.

#### 5. Hermantown Section 13 Traffic Impact Study

James Gittemeier reported that the City of Hermantown had requested the MIC to revisit the Hermantown-Section 13 Circulation Analysis Report due to a plan for a large expansion of multiple family housing units along Westberg Road. The MIC teamed up with URS Corporation to conduct this traffic circulation analysis in April, with major work activities concluded by the first week of June.

He presented six traffic modeling scenarios which demonstrated the projected impacts on the internal circulation movements within Section 13 from alternative ingress/egress routes to the housing development. Final analysis showed that all scenarios ranked OK, with either no or low effects on the Level of Service coming in and going out on Westberg Road. The preferred option would be the Mall Drive extension, which would add a second access point to the area.

During the discussion it was noted that the model assumes the planned intersection improvements (Haines Road traffic lights as well as a new road near Sam's club) had been implemented. Ron noted that although there were no significant impacts on the Westberg Road area, there were other intersections in the wider area that did show potential impacts (Haines Road/Arrowhead, and Stebner Road/Arrowhead), that will need to be discussed with the County.

He added that he would be presenting these modeling results and recommendations to the Hermantown Planning Commission tonight.

#### 6. Downtown Modal Connections Study

Holly Butcher reported on this study that is newly underway. The idea is to connect the "three islands" that exist in Duluth – downtown central business district, Canal Park and the DECC. The Downtown Council, which initiated this study request, wants to look at all three areas as a total system with the goal of connecting them and making sure that visitors to Canal Park can find their way into the downtown area, with the aid of wayfinding signage, shuttles, etc.

The work of the study will begin by identifying specific barriers (Highway I-35 is the main obstacle), as well as opportunities to connect all transportation modes to achieve greater connectivity. Field research planned for this summer will include pedestrian, traffic and tube counts during several upcoming events at the DECC in July and a possible visitor survey. They are interested in finding whether there is a difference between peak vehicle and peak pedestrian times of day.

#### 7. East Second Street Study

Robert Herling reported that work has begun anew on this study, with a focus on access management. After assessing much of the corridor from the perspective of land use densities access points, and crash rates, it was determined that the study area should be extended further south approximately 4.5 miles to 53rd Avenue.

Next steps will be to form a study committee; he also expects a lot of additional data-gathering activities for the summer, as well as conducting public involvement and a survey of business in the study area.

## 8. Roundtable Discussion

**Dennis Jensen** reported that first quarter 2008 DTA ridership figures showed a 12.4% increase (about 85,000 rides) over the first quarter of 2007.

He added that in WI, the possibility of creating regional transportation authorities is being discussed as a way to meet transit needs in rural areas, looking at bonding authority.

**Susan Thompson** reported that the Duluth Air Show is scheduled for July 19<sup>th</sup> and 20<sup>th</sup>. Dave Salo added that those are the same dates as Hermantown's Summerfest...creating the likelihood of traffic issues in some areas.

**Dena Ryan** reported that the Blatnik Bridge was closed from Duluth to Superior for work to reinforce the gusset plates, estimated to last a couple of weeks in both directions.

**Cindy Voigt** reported that work on Airport Road was still underway and cautioned people to take the signed detour route.

**Denny Johnson** announced that MnDOT hopes to re-let the Miller Hill project on June 27, hopefully it will be underway by July/August. Susan Thompson noted that airport project bids have generally been coming in under the project estimates, perhaps bodes well for this project as well.

He also noted that MnDOT recently made a presentation to the Senate Transportation Committee about how to spend recent increase in funds...bulk to go to bonding for bridge and pavement improvement projects. He added that northeast Minnesota will be seeing a significant funding increase for the next four years, based on performance-based needs, particularly in pavement improvements (budgets back to normal about \$60 million in 2013).

Denny closed with the announcement that the State Plan Coordinating Committee will be holding a public outreach meeting next Thursday, June 26 from 9:30 a.m. - 12:30 p.m. at Country Inns & Suites Duluth North, 4257 Haines Road, in Hermantown. Members of the public, transportation stakeholders, local government officials and others are invited to discuss the updated state's long-range transportation plan.

## 9. Project Updates

### Scope of Work – Regional Freight Study

Ron Chicka announced that a Scope of Work for a regional freight study will be presented at next month's meetings. He added that recent meetings with MnDOT have expanded the study area to include District 2 (northern Minnesota) in addition to District 1 (northeast Minnesota). Project management will be jointly coordinated between the MIC and Mn/DOT central office personnel. The new Mn/DOT Freight Planning Manager brings a great deal of experience in projects such as this and will play a large role in the project from start to finish. He added that although funding from MnDOT is solid (\$200,000 from Mn/DOT Central Office and \$50,000

over two years from the MIC to hire a consultant), funding from WisDOT is unexpectedly now uncertain. Meetings will continue with their Central Office.

**Draft 2009-2012 Duluth Metro TIP,**

James Gittemeier announced that he had held a public information session at the Holiday Center on Wednesday, June 4, 2008 from 11:30am to 1:30pm. He also reminded TAC members that comments on the draft tip are due by this Friday. He added that he will be working with the area jurisdictions as they update their project lists and financial capacity information. The format of the document continues to be updated and the major changes to the document will be reviewed in detail at the July MIC & TAC meetings, when it will be presented for approval.

**10. Adjournment**

With no further agenda items or announcements, Chair Johnson adjourned the meeting at 3:04 pm

*(Note: the following text is an abbreviated version of the Scope of Work that will be attached to a Request for Proposal seeking consultant services to be sent out by MnDOT's Freight Office)*

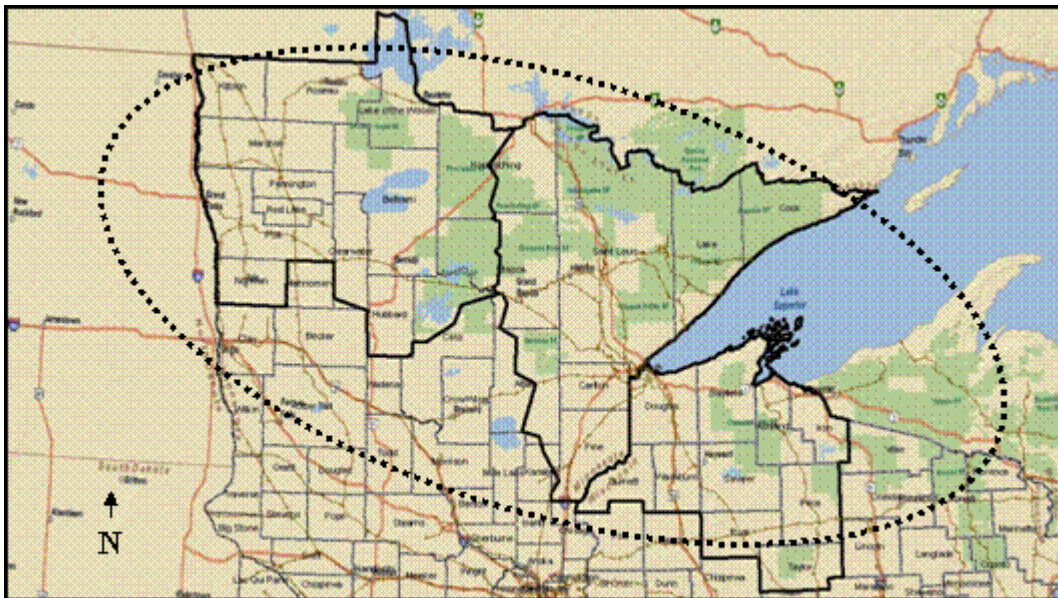
### **Background**

Freight flows throughout northern Minnesota and Wisconsin heavily impact the transportation system. The ability of this system of roads, railroads and waterways to move freight can dictate how competitive our region remains to attract industry and jobs. Given the proposed changes in the natural resource industry and rising energy costs, planning for an efficient freight movement system is critical. The Northern Minnesota/Northwest Wisconsin Regional Freight Study will be a multimodal comprehensive look at freight movement throughout the region. The study will document freight movements, identify industry trends, illustrate key deficiencies, outline opportunities, conduct stakeholder outreach and develop recommendations. It will provide a better understanding of the demands from freight placed on the regional transportation infrastructure and provide a framework to identify necessary improvements that will accommodate economic growth within the region.

### **Geographic Scope for Planning Work**

The base area of this planning work is defined as Northern Minnesota and Northwest Wisconsin. We will be primarily looking at freight issues in MnDOT's Districts 1 and 2 as well as most of the Northwest Regional Planning Commission's planning area (see map below). However, many freight flow origins and destinations extend beyond these boundaries. As such, the plan must consider the linkages to state, national, and international freight systems and markets.

### **Objectives**



*Study Focus Area*

- **Document current freight movements** to better understand the regional transportation system.
- **Identify deficiencies in the transportation system** as they relate to freight movement.
- **Analyze current freight flows** and identify trends to anticipate future freight movement needs.
- **Assess freight related programs** and explore improved efficiencies and future opportunities.
- **Conduct an outreach program** that is effective in obtaining stakeholder input and providing information to decision makers and the general public.
- **Develop recommendations and implementation strategies** that include infrastructure and operational improvements as well as program development.
- **Develop partnerships** among freight stakeholders and government agencies to work toward freight system improvements that will enhance regional economies and access to global markets.

## Tasks

### Task 1: Current Freight System Inventory

Collect and create GIS data to include the following:

- Major freight generators, receivers, providers (stakeholders)
- Major freight handling facilities
- Regional Trade Centers (RTCs)
- Port and intermodal facilities
- Airport facilities and carriers
- Active railroads, including class and ownership
- Marine routes and carriers
- Pipelines
- Truck weight and inspection facilities
- Safety rest areas
- Mn/DOT-designated Interregional Corridors (IRCs)
- National Highway System
- Trunk Highway Corridors
- STRAHNET (Strategic Highway Network), STRACNET (Strategic Railroad Network), and waterborne strategic transportation
- Twin Trailer Routes
- State-designated Highway Commercial Freight Network
- Last mile, Intermodal, and other significant freight connections
- Heavy-vehicle routes “ Super routes”

### Task 2: Freight Analysis

Identify key deficiencies in the regional freight transportation system such as capacity, infrastructure condition, level of service, access to markets, intermodal needs, cost of service, or other issues related to infrastructure, operations or regulation of the freight system. This task should also highlight strengths from a regional freight perspective.

### **Task 3: Regional Freight Issues and Trends**

Identify region and industry specific issues and trends, and how each impacts freight mobility in the region. The issues and trends will include the following:

- Key industries
- Major industry freight logistics patterns
- Current freight flows
- Modal trends
- Security issues
- Freight system market analysis
- Impact of the freight system on the economic competitiveness of the region in the global marketplace
- Key external markets for the region's economy

### **Task 4: Program Analysis**

Identify the impacts from and opportunities for improvement within existing freight programs such as CVO (Commercial Vehicle Operations), Grade Crossing Safety Improvement Program, MRSI (Minnesota Rail Service Improvement Program), Port Development Assistance Program, air cargo, State Transportation Plan and Policy, and regional, District, MPO, and local programs. Assessment will also determine program impact on present and future freight considerations on transportation policies, planning, and programming within the study area.

### **Task 5: Outreach**

Conduct focused interviews and presentations with public and private partners to validate and identify key regional needs. Incorporate observations and inputs from these stakeholders into the study. Develop strategies for potential improvements to programs and projects, including establishing communications and channels to allow public and private sector groups and individual organizations to participate in ongoing planning or project development. Involve stakeholders including public agencies, chambers, trade groups, industries/shippers/carriers, and interested parties not otherwise participating in steering, technical advisory, research, and interview activities of the study.

### **Task 6: Recommendations**

Develop a list of primary freight needs and recommend improvements. Summarize needs by freight mode/program area. Identify improvements to regional transportation system as well as implementation strategies for achieving those improvements. Package and align implementation strategies to maximize eligibility for funding under SAFETEA and pending transportation legislation. Identify potential public and private partnerships that would improve the freight system. Suggest changes in project planning and programming steps, including prioritization criteria and procedures, so as to better incorporate consideration for freight into federal, state, regional, and local planning processes.