

MEETING NOTICE



TRANSPORTATION ADVISORY COMMITTEE

Tuesday, October 14, 2008 at 1:30 p.m.

Hermantown Public Safety Building – Training Center
5111 Maple Grove Road, Hermantown, MN

Action Items / Review for Approval:

- Amendment #7 to 2008-2011 Superior Metro TIP
- 2009-2012 Superior Metropolitan Area TIP—Final
- Superior-Blatnik Bridge Traffic Study—Scope of Work
- 2009-2010 MIC Work Program & Budget—Draft

Guest Speaker:

- Pam Kramer, Executive Director, Duluth Local Initiatives Support Corporation (Duluth LISC)—*Creating Neighborhoods That Work- At Home in Duluth Sustainable Community Plans- Transportation Connections*

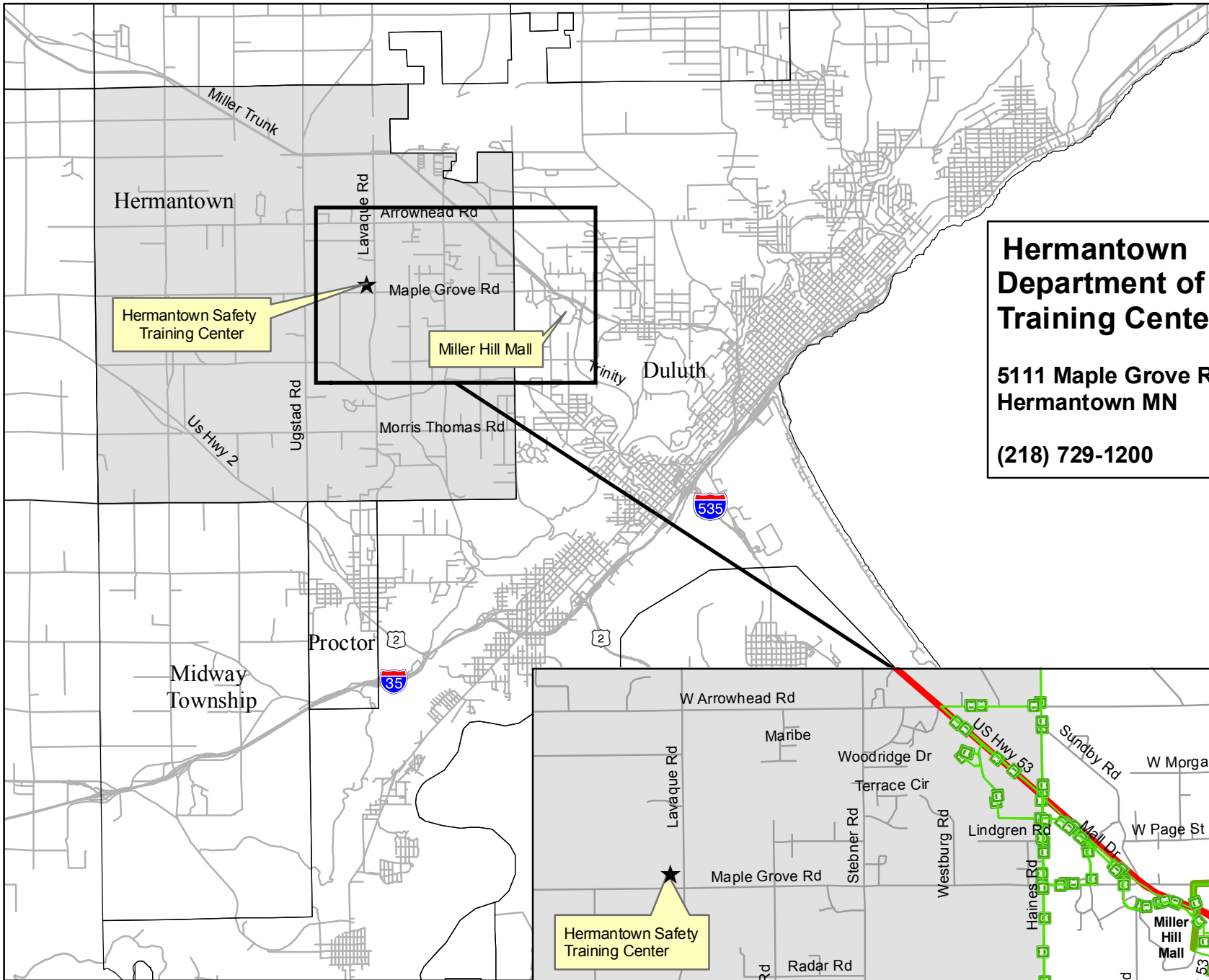
Discussion / Informational Items:

- UMD/CSS Transportation Assessment
- Proctor Comprehensive Plan
- Downtown Duluth Modal Connections Study
- HTAC/Harbor Planning Update

Driving Directions & Parking Information: *See map on next page*

Attendance for Meetings:

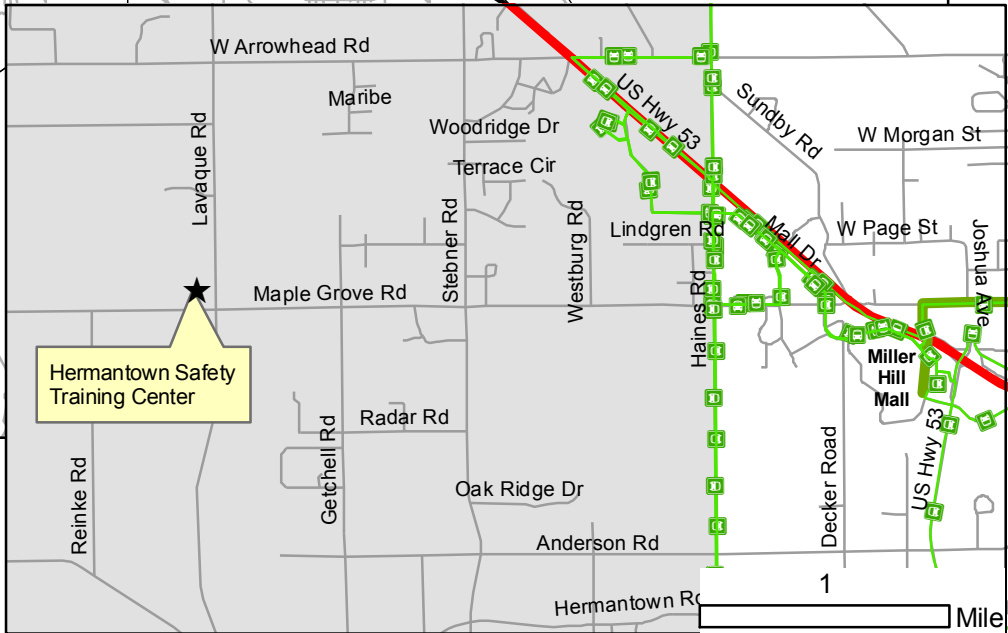
If you are NOT able to attend, or expect to arrive late to the meeting, **please contact Rondi Watson at rwatson@ardc.org or 529-7541** to ensure a quorum will be present for voting items on the agenda.






**Hermantown
Department of Public Safety
Training Center**

**5111 Maple Grove Rd
Hermantown MN**

(218) 729-1200



Legend

-  DTA Bus Route
- Bike Routes**
-  Primary On-Street Unsigned Route
-  Bicycling Prohibited or Not Recommended



**TRANSPORTATION ADVISORY
COMMITTEE (TAC)
MEMBERS**

Airport

Brian Ryks
Susan Thompson (*alternate*)

Bikes / Pedestrians

Bryn Jacobson

City of Duluth

Jim Benning
Chuck Froseth
Cari Pedersen
Cindy Voigt (*alternate*)
Vacant

City of Hermantown

David Salo
Lynn Lander (*alternate*)

City of Proctor

Jim Rohweder

City of Superior

Jason Serck
Jeff Goetzman

Douglas County

Paul Halverson

Duluth Transit Authority

Dennis Jensen
Jim Heilig (*alternate*)

MN DEED Office

Heather Rand

MnDOT

Denny Johnson, *Chair*
Walter Leu

Ports

Jim Sharrow

St. Louis County

Jim Foldesi
Brian Boder (*alternate*)

WisDOT NW Region

Dena Young, *Vice-chair*

DULUTH-SUPERIOR METROPOLITAN INTERSTATE COUNCIL
TRANSPORTATION ADVISORY COMMITTEE MEETING

Tuesday, October 14, 2008 at 1:30 p.m.

Hermantown Public Safety Bldg - Training Center
Hermantown, MN

AGENDA

1. Introductions / Agenda Review	<i>5 min</i>
2. Committee Business <ul style="list-style-type: none"> TAC Meeting Summary of September 2, 2008 	
3. Amendment #7 to 2008-2011 Superior Metropolitan Area TIP <ul style="list-style-type: none"> Review for Approval, <i>Sheldon Johnson</i> 	<i>5 min</i>
4. 2009-2012 Superior Metropolitan Area TIP (Final) <ul style="list-style-type: none"> Review for Approval, <i>Sheldon Johnson</i> 	<i>10 min</i>
5. Superior-Blatnik Bridge Traffic Study – Scope of Work <ul style="list-style-type: none"> Review for Approval, <i>Robert Herling</i> 	<i>10 min</i>
6. Draft 2009-2010 MIC Work Program and Budget <ul style="list-style-type: none"> Review for Approval, <i>Ron Chicka</i> 	<i>10 min</i>
7. Creating Neighborhoods That Work- At Home in Duluth Sustainable Community Plans- Transportation Connections <ul style="list-style-type: none"> Presentation and Discussion, <i>Pam Kramer, Exec. Director, LISC</i> 	<i>15 min</i>
8. UMD-CSS Transportation Assessment <ul style="list-style-type: none"> Presentation and Discussion, <i>Andy McDonald</i> 	<i>10 min</i>
9. Proctor Comprehensive Plan <ul style="list-style-type: none"> Presentation and Discussion, <i>James Gittermeier</i> 	<i>10 min</i>
10. Downtown Duluth Modal Connections Study <ul style="list-style-type: none"> Presentation and Discussion, <i>Holly Butcher</i> 	<i>15 min</i>
11. HTAC/Harbor Planning Update <ul style="list-style-type: none"> Presentation and Discussion, <i>Andy McDonald</i> 	<i>10 min</i>
12. Roundtable Discussion – Local Projects	<i>5 min</i>
13. Project Updates And Informational Items <ul style="list-style-type: none"> East Second Street Study, <i>Robert Herling</i> Long Range Transportation Plan 2035 Update, <i>Robert Herling</i> SRTS Applications for Duluth and Proctor, <i>Holly Butcher</i> No MN/NW WI Freight Study, <i>Andy McDonald</i> Transportation Research Board Presentations, <i>Andrea Diamond</i> 	<i>5 min</i>

Next TAC Meeting: Wednesday, December 10, 2008
WITC Conference Center, Superior, WI

Agenda Topics and Project Updates

October 14, 2008 Meeting



Transportation Advisory Committee

* = Approval Item

1. INTRODUCTIONS AND AGENDA REVIEW

2. COMMITTEE BUSINESS

- Meeting Summary of September 2, 2008* (enclosed, pp. 8-12)

3. AMENDMENT #7 TO 2008-2011 SUPERIOR METROPOLITAN AREA TIP*

It is necessary to consider an amendment to add a project for inclusion in the current (2008-2011) Superior Urbanized Area TIP. **Amendment #7** adds a right-of-way acquisition to an approved project in the 2008-2011 Superior Urbanized Area TIP. A summary of the proposed amendment is outlined below:

2008 Transportation Improvement Project (Roadway)

Jurisdiction and Project Number	Project Description	Type of Cost	Estimated Costs & Funding Sources in Thousands			
			Federal	State	Local	Total
WisDOT 113-07-007	Belknap Street Extension – From USH 53/2 intersection westerly 0.7 miles. 1190-44-00, 20, 71	PE		250		250
		ROW				
		CONST				
		TOTAL		250		250

This project involves the need to potentially acquire right-of-way for future project improvements. Project to begin in CY 2008.

If you have any questions regarding this project, please contact Sheldon Johnson at sjohnson@nwrpc.com or (715) 635-2197.

4. FINAL 2009-2012 SUPERIOR METRO TRANSPORTATION IMPROVEMENT PROGRAM *

(document is attached as separate pdf for your review)

At the upcoming October MIC meetings, the final Superior Urbanized Area Transportation Improvement Program will be considered for approval. A single public comment was offered during the 30-day review period that began in mid-September.

If you have any questions please contact Sheldon Johnson at (715) 635-2197 or by email at sjohnson@nwrpc.com.

5. SUPERIOR – BLATNIK TRAFFIC STUDY – SCOPE OF WORK* (enclosed, pp. 13-14)

In cooperation with WisDOT, the MIC will be examining traffic issues related to the I-535/US 53 interchange as it exists in its current design. The work will involve safety and efficiency assessments at this location, as well as modeling the effects that different traffic

Agenda Topics and Project Updates, continued
September 2, 2008 Meeting

Transportation Advisory Committee

scenarios would have on a number of roads in north Superior. The scope of work for this project will be presented for approval at this month's meeting.

If you have you comments or questions, please contact Robert Herling at rherling@ardc.org or (218) 529-7573.

6. DRAFT 2009-2010 MIC WORK PROGRAM AND BUDGET* (*document is attached as separate pdf for your review*)

The draft 2009-2010 Work Program and Budget will be reviewed at the October MIC and TAC meetings. I will discuss the results of input from my survey sent to members asking their project preferences. An update of the Long Range Plan will take a large amount of staff time in 2009 as well as the area wide Freight Plan. I will discuss the current projects slated to end in 2008 and how we will incorporate some time for them to conclude in calendar year 2009. As in 2008, our harbor, bike and pedestrian efforts will also be expanded as we continue to take on greater responsibilities in these areas. Discretionary projects for 2010 will be examined further over the next month and can be included within the final work program.

If you have you comments or questions, please contact Ron Chicka at 529-7541 or at <mailto:rchicka@ardc.org>.

7. GUEST SPEAKER – PAM KRAMER, EXECUTIVE DIRECTOR, LOCAL INITIATIVES SUPPORT CORPORATION (LISC)

Pam Kramer will present information about the Duluth LISC, their recent "At Home in Duluth" community development initiative and related transportation issues. Pam contacted us recently as part of an outreach to planning entities such as the TAC and MIC, to raise awareness of their work and to find ways to coordinate our efforts if possible.

8. UMD-CSS TRANSPORTATION ASSESSMENT

This study process is transitioning from the problem identification phase to the solution identification phase. We will be hiring a bike design expert to ride UMD-CSS area roads with MIC staff, study committee members and any MIC or TAC members who want to participate. The goal of the ride is to identify low cost solutions to encourage more people to safely ride their bikes in the campus areas. I will present the results of this activity at our October meetings.

If you have comments or questions, please contact Andy McDonald at amcdonald@ardc.org or (218) 529-7514.

9. PROCTOR COMPREHENSIVE PLAN

MIC staff met with the Proctor Comp Plan Group to focus the plan on a set of themes, and in turn, goals, objectives, and implementation policies. A vision was identified at the Community Visioning meeting, and is the basis on the direction of the Comp Plan.

Agenda Topics and Project Updates, continued
September 2, 2008 Meeting

Transportation Advisory Committee

A series of meetings have been scheduled, including a community-wide meeting to go over the vision statement, goals, and strategies. The planning process will conclude with a Draft for review in January. The plan will then move through the City of Proctor approval process in February, with the final Comp Plan document before the MIC in March.

If you have comments or questions, please contact James Gittemeier at jgittemeier@ardc.org or (218) 529-7556.

10. DOWNTOWN DULUTH MODAL CONNECTIONS ASSESSMENT

Zenith Research has completed their survey of resident and tourist perception of transportation in the Greater Downtown Duluth area. This report will be presented to the Downtown Modal Connections Steering Committee on October 2nd. I'll provide an update on this project at the October TAC and MIC meetings.

If you have comments or questions, please contact Holly Butcher at holly.butcher@ardc.org or (218) 529-7548.

11. HTAC/HARBOR PLANNING UPDATE

The September 3rd HTAC meeting was held at the MPCA Conference Room. Our agenda included presentations on the following topics: St. Louis River National Estuarine Research Reserve, Great Lakes Maritime Research Institute Northern Minnesota-Northwest Wisconsin Freight Study, RailMate Operation Review and Dredged Material Management Plan Update. I will also provide an update on the harbor tours aboard the LL Smith and the Great Lakes Maritime Research Institute University Affiliates Meeting.

If you have you comments or questions, please contact Andy McDonald at amcdonald@ardc.org or (218) 529-7514.

12. ROUNDTABLE DISCUSSION

13. PROJECT UPDATES

East Second Street Study, Robert Herling

The steering committee for this study met in July 2008 to be briefed on study tasks already accomplished and the resulting findings. This committee included helped identify thinks that need to be further considered as the study moves forward. From this committee, a public participation strategy was developed which included engaging the local media and advertising the opportunity for people to get information and provide comments via the MIC website. An article appearing in the Superior Telegram on August 28 provided a good overview of the project goals and generated a number of responses to the MIC website. Presently, MIC staff is gathering speed counts along the E 2nd Street corridor which it will analyze and share the results in the next steering committee meeting tentatively scheduled for January 2009.

Agenda Topics and Project Updates, continued
September 2, 2008 Meeting

Transportation Advisory Committee

Long Range Transportation Plan 2035 Update, Robert Herling

Staff at the MIC are presently gathering building permit information dating back to 2003, the year that work on the last Long Range Transportation Plan (LRTP) update began. This information will be used to update the MIC's traffic demand model to generate traffic forecasts to be used in assessing the area's long range transportation objectives and needs. As this information becomes processed, the MIC will be bringing it to area jurisdictions for verification and input before moving forward with updating the model.

SRTS Applications for Duluth and Proctor, Holly Butcher

Several SRTS meetings have been scheduled for the month of October. The Duluth Public School District will discuss implementation of existing grants in addition to discussing school projects for the 2009 grant solicitation. In Proctor, MIC is assessing transportation patterns and issues around Bay View Elementary and Proctor Middle Schools. An assessment with county and city engineers will be conducted with Proctor School District Staff on October 9th.

Northern Minnesota/NW Wisconsin Freight Study, Ron Chicka

Last month the first meeting of the project steering committee met to discuss the entire work scope and key issues that should be under analysis for the plan. Members of the steering committee include both MNDOT and WISDOT staff, DNR staff from both states, university level partners, St Louis and Douglas County staff and Port Authority staff. In mid-October a consultant will be hired to assist with this project. I will be working with MNDOT in this hire. We also began to look at data needs and mapping needs toward the task of dividing up tasks between agencies.

Transportation Research Board Presentations, Andrea Diamond

Robert Herling, MIC Planner, and Andrea Grygo Diamond, the MIC's GIS Specialist, presented papers on crash analysis and visualization, respectively, at the Transportation Research Board (TRB) 11th Annual Tools of the Trade Conference in Portland, Oregon. Both papers showcase the MIC's unique, innovative work in these areas. Andrea's presentation "Demystifying Visualization: How to use visualization in your community" was selected as one of the five "Best Papers" and will be presented at the national TRB meeting in January in Washington DC.



Duluth-Superior Metropolitan Interstate Council
TRANSPORTATION ADVISORY COMMITTEE
MEETING SUMMARY
Tuesday, September 2, 2008, 1:30 PM

Meeting Location	Proctor Community Center, 100 Pionk Drive, Proctor, MN	
Meeting Chair	Denny Johnson	
Note Taker	Rondi Watson	
Members Present	Chuck Froseth	City of Duluth
	Denny Johnson	Mn/DOT District 1
	Cari Pedersen	City of Duluth
	David Salo	City of Hermantown
	Jim Rohweder	City of Proctor
	Dena Ryan	WisDOT NW Region
	Cindy Voigt*	City of Duluth
Members Absent	Jim Benning	City of Duluth
	Jim Foldesi	St. Louis County
	Jeff Goetzman	City of Superior
	Paul Halverson	Douglas County
	Bryn Jacobson	Bike/Pedestrian Rep
	Dennis Jensen	Duluth Transit Authority
	Walter Leu	Mn/DOT District 1
	Heather Rand	Mn DEED
	Jason Serck	City of Superior
	Jim Sharrow	Duluth Seaway Port Authority
Others Present	Holly Butcher	ARDC / MIC Senior Planner
	Ron Chicka	ARDC / MIC Director
	James Gittemeier	ARDC / MIC Planner
	Sheldon Johnson	ARDC / MIC Associate Planner
	Denise McDougall	Lake Superior Warehousing
	Tim Mitchell	FHWA-St. Paul
	Rondi Watson	ARDC / MIC Secretary
	* Alternate	

1. Introductions and Agenda Review

TAC Chair Denny Johnson called the meeting to order at 1:36 p.m. and meeting attendees introduced themselves. No changes to the agenda were put forward.

2. Committee Business – Meeting Summary of July 15, 2008

Motion and Discussion David Salo/ Jim Rohweder moved to approve the meeting summary from the July 15, 2008 meeting. There was no discussion and the motion was approved unanimously.

Committee Business – Changes to the Agenda

Denny announced that one item (Amendment #10 to the 2008-2011 Duluth TIP) needed to be added to the agenda and another item (presentation about the Long Range Plan Update) was being removed. No other changes to the agenda were requested.

3. Amendment #6 to 2008-2011 Superior Metro Transportation Improvement Program

Sheldon Johnson presented an amendment to the 2008-2011 Superior Urbanized Area TIP to add a project, programmed by the WisDOT Central Office, involving the inspection and replacement of necessary suspender cables along the Wisconsin portion of the Blatnik Bridge. Project to begin in CY 2008.

Motion and Discussion Dena Ryan/Chuck Froseth moved to approve Amendment #6 to the Superior TIP. There was no further discussion and the motion was approved by unanimous vote.

4. Amendment #10 to the 2008-2011 Duluth Metro Transportation Improvement Program

James Gittemeier presented an amendment which he described as mainly administrative, moving the project to pave the perimeter road at the Duluth Air National Guard base from FY2008 to FY2009 in the 2008-2011 Duluth Metro TIP.

Motion and Discussion Dave Salo/Jim Rohweder moved to approve Amendment #10 to the 2008-2011 Duluth Metro Transportation Improvement Program as presented.

During the discussion, Cindy Voigt questioned why the amendment was necessary, since the newer version of the TIP (for 2009-2012, recently approved by the MIC and TAC), already lists the project for 2009. Furthermore, she noted that she had just let the project, i.e., in federal fiscal year 2008, so why program the funds for 2009?

After discussing the question with Gus Peterson at MnDOT, James clarified that although the project is listed for 2009 funding in the more recent (2009-2012) TIP, that version has not yet been officially approved by the FHWA, so it is technically not the current TIP. He added that since the state fiscal year 2009 had already begun, the project needs to be listed as a 2009 project in the current (2008-2011) TIP, hence the amendment.

There was no further discussion and the motion was approved by unanimous vote.

5. 2009-2012 Draft Superior Metro Transportation Improvement Program

Sheldon Johnson distributed copies of the draft Superior Urbanized Area Transportation Improvement Program for 2009-2012 and reviewed the projects on a year-by-year basis. Eleven major projects covering multiple modes are being proposed for funding in the upcoming 4-year period. He closed by requesting approval to release the draft plan for the required 30-day public comment period.

MIC Transportation Advisory Committee
September 2, 2008 Meeting Summary

Motion and Discussion Dena Ryan/Cari Pedersen moved to release the draft document for the mandatory 30-day comment period. There was no discussion and the motion was approved by unanimous vote.

6. 2009-2010 MIC Work Program Projects

Ron Chicka opened a discussion about projects to be programmed for 2009 and 2010. He noted that he would be following up by emailing all TAC and MIC members not present at this month's meetings. He began by noting that mandatory projects include work on the Long Range Transportation Program, the Transportation Improvement Programs (TIPs) for both Duluth and Superior, and transit and bike route planning.

In addition, each year can accommodate a few discretionary planning projects. Some of the projects already programmed for 2009 (determined last year with the approval of the 2008-2009 Work Program) have or will begin by the end of this year, including the regional freight plan, superior bike route planning, and a study of the Blatnik Bridge. He noted that the latter was prompted by WisDOT's request to project traffic volume in advance of planned work in 2014 which may shut the bridge down for the summer and route all traffic across the Bong Bridge instead. Other projects to begin in 2009 include a Superior Urban Area Growth Impact Study, similar to the one conducted for Duluth to determine potential growth patterns into the townships, as well as a Central Entrance study, building off of the existing Miller Hill Study to examine land uses and improve safety and access management along the corridor between MnDOT and Cub Foods.

He then presented some proposed project options for 2010, including a Metropolitan Pedestrian Plan (a policy plan to build off the Long Range Plan); a metropolitan rail plan (another policy plan); and a Kirkus Street plan examining land use, zoning, and streetscaping for the City of Proctor before development gets going along that new street. Two transit plans were also proposed, including an update to the 1998 Transit Vision plan for the entire MIC planning area, and a regional transit study on the Wisconsin side (a consultant conducted this type of study a few years ago on the Duluth side). He then opened it up for discussion, asking for other ideas.

Cari Pedersen suggested a rail plan that looks at linking rail, trail, transit connections if and when passenger rail comes to Duluth. She noted that there's an interest, currently, in linking all parts of the City, including Lakeside and west side. Ron stated that he would prefer to wait to be approached by the City as plans develop instead of taking it on in advance of rail plans being finalized.

Cindy Voigt suggested a comprehensive, GIS-based pavement management system, a central database of pavement conditions for all jurisdictions.

Holly Butcher noted local bike advocacy groups that are calling for bike lanes on strategic routes. Ron replied that it's included as a standing item, under bike route implementation.

Sheldon Johnson inquired about the possibility of an about aerial photo update. Ron replied that the MIC budget can't swing it alone; it must be a multi-jurisdictional project, with financial contribution from city and county. Sheldon mentioned that in Wisconsin, grant

MIC Transportation Advisory Committee
September 2, 2008 Meeting Summary

funding paid for a flyover of a particular area.

Ron also mentioned that he had set aside \$25,000 in the current budget to construct a demonstration project on roundabouts, to show how they can function, how to design them and how not to design them. Cindy Voigt suggested that she would prefer to spend the money to identify a few key areas to target as good candidates for roundabouts, i.e., a Roundabout Feasibility Location Study.

Chuck Froseth suggested a comprehensive Duluth Trail Plan, identifying existing trails and area-wide connectivity, similar to the recent Proctor Trail Plan

Ron asked TAC members to rank these projects 1st, 2nd and 3rd in terms of their priorities. After tallying the results, he reported that the top three-ranked projects, for this group at least; were (1) a roundabout feasibility study, (2) the Kirkus Street plan, and (3) a pavement quality index (on the MN side). Next priorities include pedestrian plan and a regional trail study.

He closed by stating that the final poll results would be incorporated into the draft Work Plan and Budget, to be presented for approval at the October meetings, after all TAC and MIC members have been polled as well.

7. Downtown Duluth Modal Connection Study

Holly Butcher reviewed the goals of this study, describing it as a "transformative vision" to identify deficiencies and opportunities for connectivity between the downtown and Canal Park business districts.

She also presented results of the July traffic and pedestrian counts. She noted that it was quite revealing to note that traffic volumes on each of the four lanes on the Lake Avenue overpass peaked at different days and times on Fridays and Saturdays, reflecting the different uses from in-town and out-of-town traffic. Similarly, pedestrian traffic peaked on Saturday mid-afternoon in Canal Park, and on Wednesday during the noon hour in downtown, again reflecting the differing patterns of the two groups (Canal Park tourists and downtown workers).

She added that a consultant, Zenith Research, had been hired to conduct in-person surveys of tourists and downtown workers to better understand their perceptions, awareness and travel patterns between the two areas.

8. Superior Bike Route Planning

James gave an overview of the process for developing a system of signed bike routes in and around the City Of Superior. He's in the process of organizing a steering committee to convene in September. Other steps will be to identify potential routes and perform a Bicycle Compatibility Index (BCI) analysis to hone in on the final routes. Described it as a very data-intensive process, many components needed per block of each route; after model is run and reviewed by steering committee, public involvement phase will begin to determine that the final routes make sense. Chuck Froseth commented that including some type of school or student representative would make sense from the perspective of Safe Routes to School; James replied that he intended to recruit a student who would be able to participate in the group.

MIC Transportation Advisory Committee
September 2, 2008 Meeting Summary

9. Roundtable Discussion

No announcements were made or topics put forward for discussion.

10. Project Updates

Northern MN/Northeastern WI Freight Study

Ron reported that the MNDOT Central Office, MNDOT District staff and MIC staff continue to meet on aspects of the scope, including development of an exact project budget in preparation for the RFP that should occur in September. They have recently been in touch with Dr. Richard Stewart at UW-Superior to discuss their role in the project, who will be able to use his connections for data acquisition as well as in-kind assistance. An RFP for a study consultant should be out within the next month or so.

East Second Street Study

Ron noted that MIC staff had met with the Superior Daily Telegram and the result was a good article in the paper that will hopefully lead to more public input. A steering committee meeting for was held on August 4th to look at the various pieces of information gathered so far for this study and to help direct future tasks. It was determined that the collection of speed data was the next important task to be carried out, as well as to establish a method for people to provide input to the study via the MIC website.

Proctor Comprehensive Plan Update

James reported that the Proctor Comprehensive Plan Update will roll into full gear this fall, devising sections of the plan by topic for feedback from the Proctor Comprehensive Plan Group. MIC staff will also be facilitating a public meeting that will yield a general land use plan for the land that will be opened to development after the Kirkus Street project is completed. Holly added that the Proctor Safe Routes to School Steering committee will meet on August 19th to review school site traffic observations and survey data collected this spring.

Minnesota State Planning Conference

Holly Butcher announced that the annual state planning conference for the Minnesota Chapter of the American Planning Association (MnAPA) will be held at the DECC/Holiday Inn from Monday September 22 – Wednesday September 24. The theme, Transitions in Planning, represents the changing climate of planning topics: the housing market, transportation, environmental awareness, and design requirements.

11. Adjournment

With no further agenda items or announcements, Chair Johnson adjourned the meeting at 3:05 pm.

SUPERIOR – BLATNIK BRIDGE STUDY

Scope of Work

Background: The Blatnik Bridge (I-535) is a vital connection linking Superior, Wisconsin to Duluth, MN. It carries approximately 30,000 vehicles a day, a significant portion of which is made up of commercial trucks. The I-535 connection to northern Superior has a variety of unique characteristics that may lead to decreased safety and efficiency. In particular, its interchange with US Highway 53 contains tight radii and requires traffic to make lane changes directly before or after entering or exiting the ramps. In addition, traffic exiting I-535 straight into Superior is required to make a rapid transition from speeds above 55 mph to 35 mph. This study will look at traffic patterns as they relate to I-535 and identify options for improving conditions at the existing connections.

Study Area: The immediate study area will be concerned with the direct connections to the Superior side of I-535: Hammond Avenue, N 3rd Street, N 4th Street and US Highway 53. A larger area extending from the Bong Bridge interchange in northwest Superior to the Intersection of Belknap Street & US Hwy 53/2 to the east will be examined in terms of origin/destination trips to and from the Blatnik Bridge.

Study Goal: Identify future needs and access options for the Superior side of the Blatnik Bridge (I-535).

Objectives:

- Assess safety and efficiency of current I-535 interchange
- Determine present and future traffic demand at the I-535 connection and adjacent intersections.
- Find appropriate solutions for ensuring safe connections to I-535 and efficient movements on adjacent roadways.

Work Tasks:

1. *Prepare base map of the corridor*
 - Use GIS data, aerial photography, and on-site observations to develop a map of the study area.
 - Identify land uses in the study area and existing right-of-way in the area of the I-535 interchange.
2. *Collect existing information*
 - Revisit past studies from WisDOT, the City of Superior, and the MIC that are relevant to the study.
 - Acquire existing ADT, vehicle class counts, and any turning-movement information that may exist for major routes, intersections and ramp connections in the study area.

- Gather crash data for roadways in the study area.
- Collect any origin/destination data regarding the I-535 connection to Superior.
- Conduct additional traffic counts and turning information where needed.
- Bring together recent traffic modeling done for routes in north Superior.
- Make necessary updates to existing traffic model and run a variety of scenarios to determine present and future traffic demand.

3. *Conduct a variety of analyses on the safety and performance of existing connections*

- Identify traffic movements of different modes within the study area, including truck and rail movements.
- Conduct an analysis of existing crash data.
- Determine present and future traffic demands for the different routes linking to I-535, especially in regards to US Highway 2, US Highway 53 and State Trunk Highway 35.
- Determine the level of service (LOS) of major intersections/connections under present conditions, and identify the potential time savings of a variety of alternative designs.
- Perform a Community Impact Analysis.

4. *Public Involvement*

- Develop an appropriate public outreach action plan.
- Identify public and private stakeholders.
- Form a study advisory committee.
- Survey the local public and private sectors for their perceptions of existing problems and recommended solutions.
- Maintain and promote a project-specific webpage that both provides users with information as well as provides an opportunity for public input.
- Document environmental justice component.
- Gather input and present findings at two public meetings.

5. *Plan Recommendations*

- Provide short, medium and long-term recommendations that will ensure safety and efficiency for all modes of traffic at the I-535 interchange.
- Identify potential funds for improvements.

Product: The study will involve a modeling component which will result in a technical report that outlines present and future traffic demand in the study area and identify operational deficiencies at key intersections and connections. Modeling done specifically for this study will be part of a larger modeling effort funded primarily by WisDOT to help determine the effects of closing the Bong Bridge (US Highway 2) for improvements in 2010 will have on the capacity of Blatnik Bridge and operations of key intersections in north Superior.

Combined with the modeling results, the study will culminate in a document that describes existing conditions and opportunities related to the I-535 interchange and provides a series of short, medium and long-term recommendations for improvements.