

# MEETING NOTICE



## TRANSPORTATION ADVISORY COMMITTEE

Tuesday, April 19, 2011 at 1:30 p.m.

Hermantown Training Center  
Hermantown, MN

### Approval / Voting Items

- Amendments #9 and 10 to the 2011-2014 Superior Area TIP, funding for sidewalk and bike lane projects
- Kirkus Street Land Use Plan

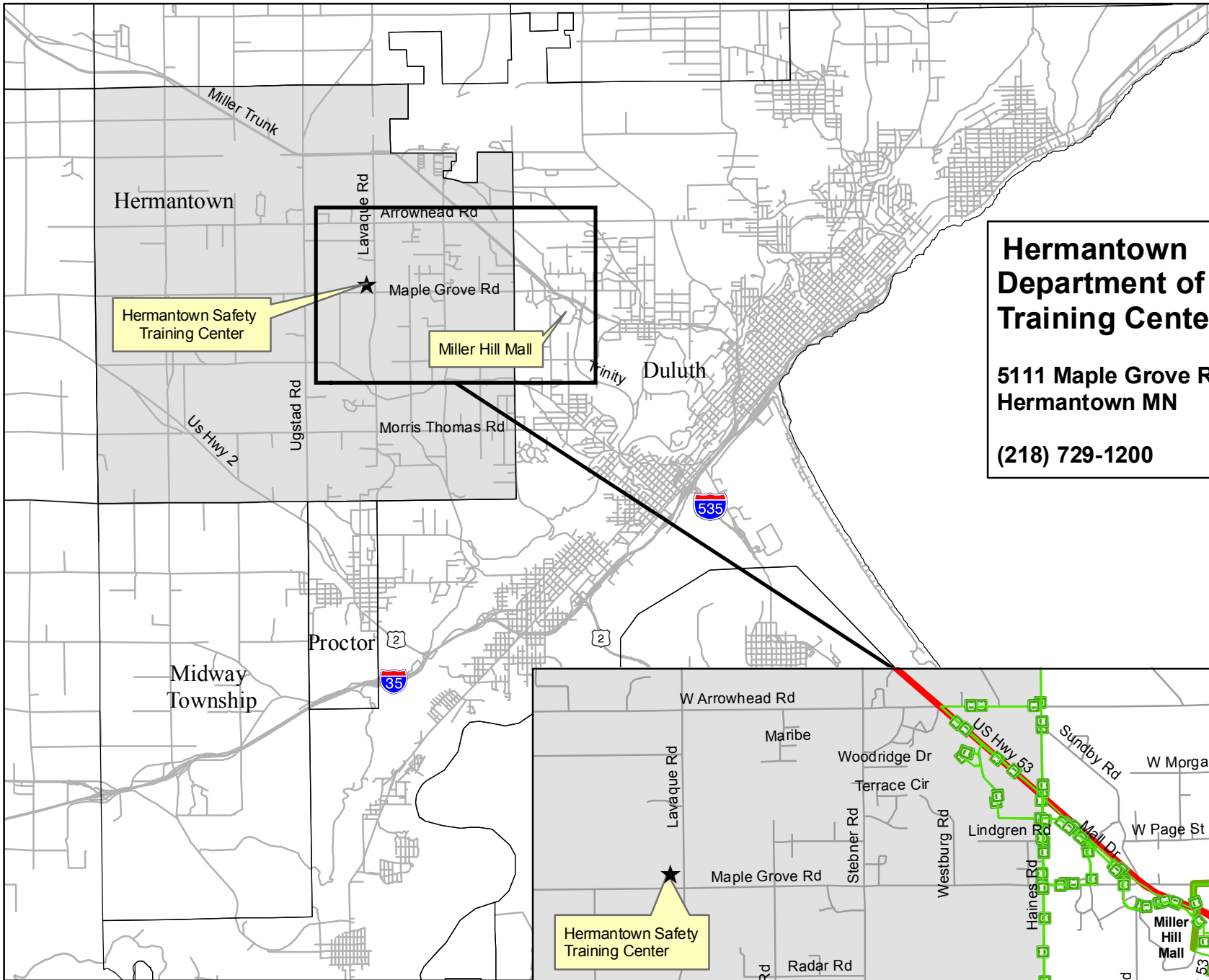
### Presentation / Discussion / Informational Items

- Central Entrance Corridor Study Update
- Duluth-Superior Metropolitan Bike Map
- Duluth Sidewalk Study Update
- CPG Funds Distribution Update

**Driving Directions / Parking Information:** *See map on next page*

### Attendance / Meeting Quorum

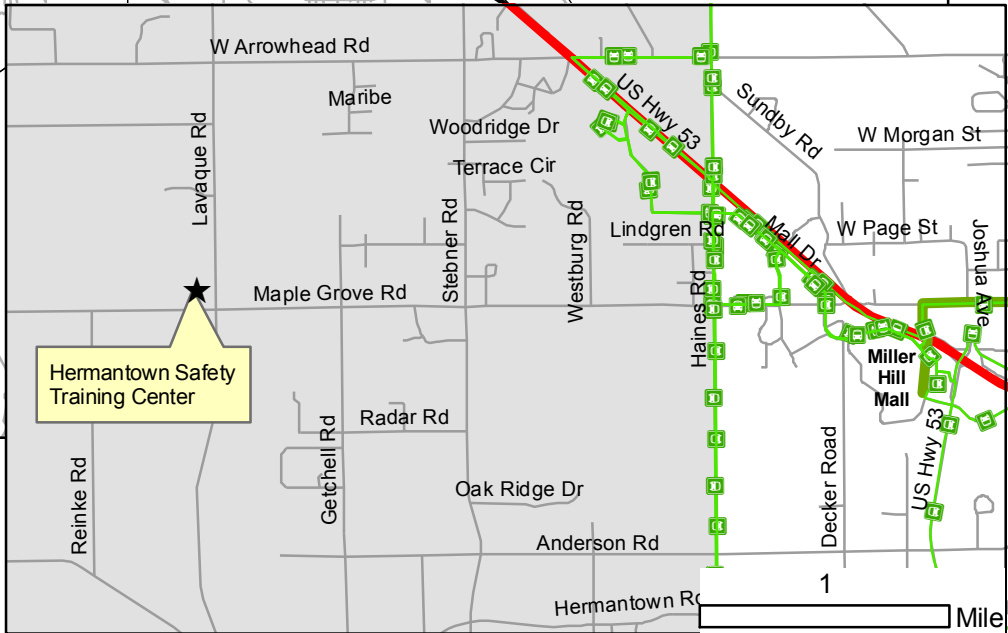
If you are NOT able to attend, or expect to arrive late to the meeting, **please contact Beth Krebsbach at [bkrebsbach@ardc.org](mailto:bkrebsbach@ardc.org) or 529-7541** to ensure a quorum will be present for voting items on the agenda.



**Hermantown  
Department of Public Safety  
Training Center**

**5111 Maple Grove Rd  
Hermantown MN**

**(218) 729-1200**



**Legend**

DTA Bus Route

**Bike Routes**

Primary On-Street Unsigned Route

Bicycling Prohibited or Not Recommended



1

Mile

**TRANSPORTATION ADVISORY  
COMMITTEE (TAC)  
MEMBERS**

**Airport**

Brian Ryks  
Alison Johnson (alternate)

**Bikes / Pedestrians**

Bryn Jacobson

**City of Duluth**

Chuck Froseth  
Cari Pedersen, *Vice Chair*  
Cindy Petkac  
Cindy Voigt  
Jim Benning (alternate)

**City of Hermantown**

David Salo  
John Mulder (alternate)

**City of Proctor**

Jim Rohweder

**City of Superior**

Jason Serck, *Chair*  
Jeff Goetzman

**Douglas County**

Paul Halverson

**Duluth Transit Authority**

Dennis Jensen  
Jim Heilig (alternate)

**MN DEED Office**

Heather Rand

**MnDOT**

Denny Johnson  
Walter Leu

**Port/Harbor**

Jim Sharrow

**St. Louis County**

Jim Foldesi  
Brian Boder (alternate)

**WisDOT NW Region**

Dena Young

DULUTH-SUPERIOR  
METROPOLITAN INTERSTATE COUNCIL

**TRANSPORTATION ADVISORY COMMITTEE MEETING**

*Tuesday, April 19, 2011 at 1:30 p.m.*

Hermantown Training Center  
Hermantown, MN

**AGENDA**

<b>1. Introductions / Agenda Review</b>	5 min
<b>2. Committee Business</b> <ul style="list-style-type: none"> <li>Meeting Summary of 3/15/11 (<i>for approval</i>)</li> </ul>	
<b>3. Amendments #9 and 10 to the 2011-2014 Superior Area TIP, funding for sidewalk and bike lane projects</b> <ul style="list-style-type: none"> <li>Review for Approval, <i>Sheldon Johnson</i></li> </ul>	5 min
<b>4. Kirkus Street Land Use Plan</b> <ul style="list-style-type: none"> <li>Review for Approval, <i>James Gittemeier</i></li> </ul>	5 min
<b>5. Central Entrance Corridor Study Update</b> <ul style="list-style-type: none"> <li>Presentation and Discussion, <i>Andy McDonald</i></li> </ul>	15 min
<b>6. Duluth-Superior Metropolitan Bike Map</b> <ul style="list-style-type: none"> <li>Presentation and Discussion, <i>Kody Thurnau</i></li> </ul>	15 min
<b>7. Duluth Sidewalk Study Update</b> <ul style="list-style-type: none"> <li>Presentation and Discussion, <i>Andy McDonald</i></li> </ul>	10 min
<b>8. CPG Funds Distribution Update</b> <ul style="list-style-type: none"> <li>Presentation and Discussion, <i>Ron Chicka</i></li> </ul>	10 min
<b>9. Roundtable Discussion– Local Projects</b>	5 min
<b>10. Project Updates</b> <ul style="list-style-type: none"> <li>2012-2015 TIP Update, <i>Robert Herling</i></li> <li>Human Services Transportation Plan Update, <i>Robert Herling</i></li> <li>Harbor Planning Update, <i>Rondi Watson Bike to Work Day, James Gittemeier</i></li> <li>APA Conference, <i>Andy McDonald</i></li> <li>Transportation Development Association – Wis. Delegation Meeting, <i>Ron Chicka</i></li> <li>Northern Lights Express Update, <i>Ron Chicka</i></li> </ul>	10 min

**Next TAC Meeting:**

Tuesday, May 17, 2011 at 1:30 p.m. – WITC Conference Center

# TAC Agenda Topics and Project Updates

April 19, 2011 Meeting

Duluth-Superior Metropolitan Interstate Council



\* = Approval Item

## 1. INTRODUCTIONS / AGENDA REVIEW

## 2. COMMITTEE BUSINESS

- Meeting Summary of March 15, 2011 \* (separate attachment)

## 3. AMENDMENTS #9 AND 10 TO THE 2011-2014 SUPERIOR AREA TIP, FUNDING FOR SIDEWALK AND BIKE LANE PROJECTS \*

It is necessary to consider an amendment to add the following project(s) to the approved projects list in the 2011-2014 Superior Urbanized Area TIP. A summary of the proposed amendment is outlined below.

### TIP AMENDMENT #9: 2011-2014 Superior Urbanized Area

This project enables the City of Superior to use federal funds to construct sidewalks along N 28<sup>th</sup> Street between Weeks Avenue and Hill Avenue. Preliminary engineering is scheduled for 2013 and construction is scheduled for 2014.

#### 2013 (PE) & 2014 (CONST) Transportation Improvements Projects (Roadway)

Jurisdiction and Project Number	Project Description		Estimated Costs & Funding Sources (Thousands)			
			Federal	State	Local	Total
City of Superior 113-11-017	N 28 <sup>th</sup> Street from Weeks Ave – Hill Ave. Sidewalk construction.	PE	26.6		6.7	33.3
		ROW				
		CONST	133.4		33.3	166.7
		TOTAL	160		40	200
Amended to TIP in April 2011	8998-24-01 PE 8998-24-73 CONST STP Urban					

### TIP AMENDMENT #10: 2011-2014 Superior Urbanized Area

A project amendment is requested to include the addition of funds to support the construction of bicycle lane enhancements along the CTH B reconstruction (113-04-002) project planned for 2011. A Transportation Enhancement (TE) award was granted to Douglas County totaling \$400,000 in federal funds and requires a local match of up to \$100,000. Reconstruction of CTH B has already been listed in the TIP document as 113-04-02 for several years. The bike lane enhancements

## MIC Agenda Topics and Project Updates, continued

April 19, 2011 Meeting

### Duluth-Superior Metropolitan Interstate Council

would be completed during the reconstruction phase of CTH B. Project code 8747-06-70 is the new bike lane enhancement portion of the project.

#### 2011 (CONST) Transportation Improvements Projects (Enhancement)

Jurisdiction and Project Number	Project Description		Estimated Costs & Funding Sources (Thousands)			
			Feder al	State	Local	Total
Douglas County	CTH B from STH 35 to CTH A – Bike Lane	PE ROW CONST	400		100	500
113-11-018	Enhancements 8747-06-70 CONST	TOTAL	400		100	500
Amended to TIP in April 2011	TE					

If you have any questions regarding this project, please contact Sheldon Johnson at 715-635-2197 or by email at [sjohnson@nwrpc.com](mailto:sjohnson@nwrpc.com).

#### 4. KIRKUS STREET LAND USE PLAN \*

After further discussion among the Kirkus Street Taskforce, changes have been made to the proposed recommendations for the study area. MIC staff will present these changes and recommend the Land Use Plan for approval.

If you have any questions regarding this project, please contact James Gittemeier at 218-529-7556 or by email at [jgittemeier@ardc.org](mailto:jgittemeier@ardc.org).

#### 5. CENTRAL ENTRANCE CORRIDOR STUDY

MIC staff met with URS, our modeling consultant, to discuss the modeling efforts for Central Entrance. They will be creating a small area model to examine potential land use changes in the corridor as well as some potential long term changes such as median treatments, new signalized intersections and access consolidation. We are also preparing an online survey to obtain the public's attitudes about this corridor. We have survey questions from the 2002 Miller Trunk Highway Implementation Plan and will use many of those to compare any change in attitudes over time.

If you have any questions regarding this project, please contact Andy McDonald at 218-529-7514 or by email at [amcdonald@ardc.org](mailto:amcdonald@ardc.org).

## MIC Agenda Topics and Project Updates, continued

April 19, 2011 Meeting

### Duluth-Superior Metropolitan Interstate Council

#### 6. DULUTH-SUPERIOR METROPOLITAN BIKE MAP

The Duluth-Superior Metropolitan Bike Map saw its last full revision in 2003. The bike map remains one of the MIC's most popular products as staff distributes a few thousand every year or two. This latest revision hopes to be as popular as the old and with local sponsorship it definitely will. Given the popularity of the bike map we reached out to the local bike shops as well as the Duluth Transit Authority to serve as sponsors of the map. In the past we had to be strategic in our distribution of the bike map in order to keep them on the shelf. Local sponsorship will help offset some of the MIC's printing costs while keeping maps in supply. Look for the new bike map later this spring.

If you have any questions regarding this project, please contact Kody Thurnau at 218-529-7515 or by email at [kthurnau@ardc.org](mailto:kthurnau@ardc.org).

#### 7. DULUTH SIDEWALK STUDY UPDATE

MIC staff is in the process of refining the methodology for creating the sidewalk inventory component of the study. We will be utilizing the Lincoln Park neighborhood as a test case. We have currently created the base coverage of sidewalks from aerial photos and will be going out in the field to collect condition ratings. We will present the condition rating system along with the the data layers that will be included in the inventory to the TAC for their input. We will modify the methodology after we receive TAC input.

If you have any questions regarding this project, please contact Andy McDonald at 218-529-7514 or by email at [amcdonald@ardc.org](mailto:amcdonald@ardc.org).

#### 8. CPG FUNDS DISTRIBUTION

To date, I have received two project requests for our extra federal funds (at an 80% federal /20% local match) with two more and possibly a third in the process of being fully developed. The City of Duluth has requested a microsimulation traffic study for the 6<sup>th</sup> Avenue East corridor between 2<sup>nd</sup> and 9<sup>th</sup> streets examining an alternate design concept and the demands upon the road from all modes. This proposed study continues efforts already conducted by the city that examined the needs of the corridor, but did not fully reach a final design phase.

The Duluth Airport Authority has submitted a request to conduct a "Air Service and Air Cargo Leakage and Expansion" study examining origin – destination information that would be used to identify future growth markets and the airline prospects to serve those markets. Financial forecasts would be conducted to determine whether new routes would be profitable. Opportunities to increase air freight would be examined too.

Additionally, I am in discussions with St Louis County on a proposal for examining possible roundabouts in the Duluth metro area and with the Port Authority staff on a study of a cruise ship terminal in the Duluth harbor and its multimodal impacts on the surrounding transportation network. The City of Superior is also developing a project for submission concerning road design of a key arterial on their system.

## MIC Agenda Topics and Project Updates, continued

April 19, 2011 Meeting

---

### Duluth-Superior Metropolitan Interstate Council

At the meetings of the TAC and MIC, we will discuss next steps in the process of moving forward with one or multiple projects.

If you have any questions about this initiative, please contact Ron Chicka at 218-529-7506 or by email at [rchicka@ardc.org](mailto:rchicka@ardc.org).

#### 9. PROJECT UPDATES

##### **2012-2015 TIP Update**, *Robert Herling*

The TIP is being updated, added the recommended projects for 2015 and making the minor changes to the projects in the other 3 years. Once the list of projects is completed, MIC staff will begin air quality conformity review and undertake the financial capacity analysis. In May, the Draft TIP will be released for public review and comment.

##### **Human Services Transportation Plan Update**, *Robert Herling*

Federal transit law requires that projects selected for funding under the Elderly and Disabled Capital Assistance Program (Section 5310), Job Access and Reverse Commute and New Freedom programs be identified in a plan. To meet this requirement, the existing Human Service Transit Coordination Plan for the MIC area and the greater Arrowhead Region is being updated to identify strategies to improve the coordination of public transit, human services transportation, and private transportation providers throughout the region. The plan will contain a list of priority projects for which area providers will be seeking future funding via the sources mentioned above.

##### **Harbor Planning Update**, *Rondi Watson*

The HTAC, through its Dredging Subcommittee, has been actively pursuing resolution of a couple of key issues over the past month.

##### **Erie Pier**

A letter, signed by the MIC co-chairs, was drafted and sent to the Commissioners of MPCA and MnDOT asking them to resolve internal classification and permitting issues related to the use of Erie Pier dredge materials in large-scale state construction projects. In response, MIC staff was notified that MPCA and MnDOT staff are working to resolve and harmonize their processes to enable the goal of beneficial reuse of this safe and clean sand and silt.

##### **Army Corps of Engineers Section 10 Regulatory Authority**

The MIC facilitated a meeting on March 28th with staff from the St. Paul office of the ACOE, in response to HTAC member concerns about recent changes in how regulations are being applied locally. ACOE staff reiterated that Section 10 of the Rivers and Harbors Act of 1899 gave the Corps regulatory jurisdiction over many construction projects on filled lands, docks and piers within the harbor, but stressed that their main concern was to maintain unobstructed navigational access. Harbor stakeholders present at the meeting expressed strong support for that goal, but cautioned that an increase in regulatory and permitting requirements could have a chilling effect on current and proposed harbor development. The Corps responded that they had streamlined their permitting process by assigning a single

## MIC Agenda Topics and Project Updates, continued

April 19, 2011 Meeting

---

### Duluth-Superior Metropolitan Interstate Council

manager to provide consistent guidance to the Duluth and Superior sides of the harbor. They also committed to finalizing a mapping project to better identify what specific parts of the harbor were subject to their regulatory authority. The MIC offered assistance with that project by offering to share our current GIS coverage of the harbor, along with other technical assistance and data.

#### **Bike to Work Day**, *James Gittemeier*

The Duluth-Superior area will be participating in the National Bike to Work Day events on Friday, May 20. The morning bicycle commuter event will include bike stations where cyclists can get a safety inspections, refreshments and bicycle commuter information, DTA bus-bike rack demonstration and more. The Duluth station will be at the Minnesota Power Plaza at Lake Ave and Superior St and the Superior station will be at Superior Public Library on the corner of Tower Ave and Belknap St. The even will take place from 7am to 9am.

#### **APA Conference**, *Andy McDonald*

Two members of the MIC staff attended the 2011 National American Planning Association Conference in Boston, MA from April 9<sup>th</sup> through April 12<sup>th</sup>. The conference offered more than 100 different sessions ranging in topics from Air Quality to Zoning Practices, and included many opportunities to learn about innovations and current issues in transportation. A major theme throughout the conference was planning under increasing constraints in funding.

#### **Transportation Development Association (TDA) – Wis. Delegation Meeting**, *Ron Chicka*

Sheldon Johnson, MIC Deputy Director and I, attended the annual TDA meetings with the Wisconsin congressional delegation in D.C. at the end of March. These sessions serve as an opportunity to discuss and educate House and Senate members on the importance of transportation of all modes toward bettering the economy of the state. The message is fairly simple: preserve the current infrastructure that is the backbone of goods and people movement throughout the nation. Funding for the transportation bill is the big uncertain issue. A gas tax increase would help in the short run, but it is quite unlikely to occur in the political climate of D.C. at the present time. We were told a bill is a possibility this summer (at a decreased amount from the past), but if not fully voted on by Congress by the August recess, it is likely going to wait until after the next Presidential election.

#### **Northern Lights Express (NLX) Update**, *Ron Chicka*

Recently, I met with the lead consultants conducting the Environmental Assessment (EA) and City of Superior staff to discuss potential sites for a station in the city as the route follows the BNSF from south to north through town and crosses into Duluth via the Grassy Point Bridge. The EA provides a very preliminary analysis concerning station location and the access requirements of said site(s). The NLX EA study as a whole remains in a “holding pattern” as the Federal Rail Administration continues their deliberations of the report to date. One new item is that the NLX Alliance has submitted a letter to the Administration requesting funds that we’re recently turned back by the State of Florida.